

Parkside apartments, Chelsea Bridge Wharf, London, SW11

£720,000

- Off plan, completion Q4 2025
- Parking available
- 1 bedroom
- 1 bathroom
- 591 sq ft living space
- 57 sq ft balcony
- Ground floor apartment
- Very Good Decoration
- Luxury residents' facilities
- Sought after location.
- 24-hour concierge

Imagine yourself living in this exquisite 2-bedroom apartment within the prestigious Parkside Development, offered by One London. Moreover, the apartment comes with a rare parking space, a coveted amenity not commonly found in central London.

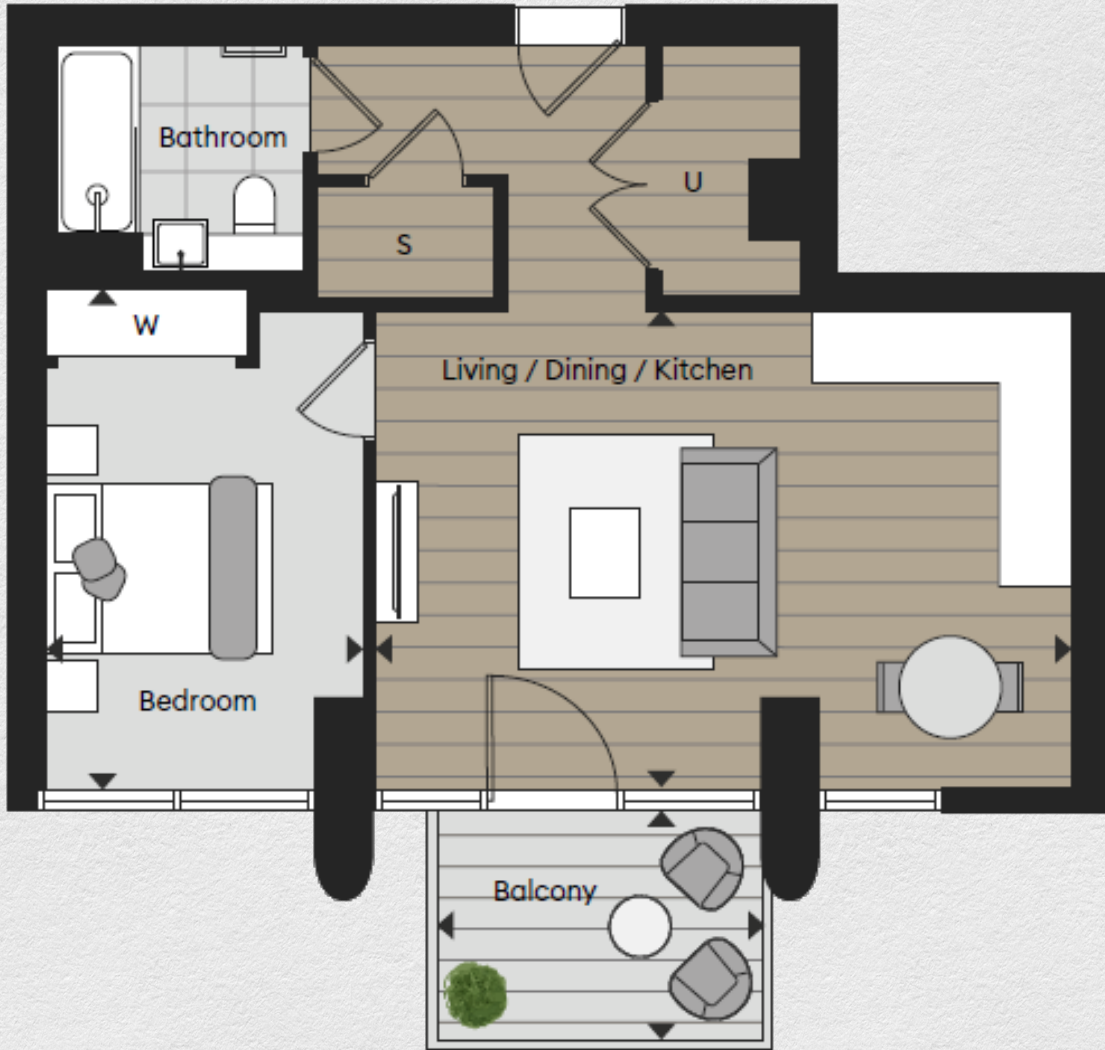
Step into the kitchen, where composite stonework surfaces and top-tier appliances, including an oven/microwave and integrated fridge/freezer. As you explore further, you'll discover meticulously crafted bathrooms featuring pristine white baths and bespoke stone resin basins, thoughtfully complemented by polished chrome fixtures, ensuring both luxury and functionality. Both spacious bedrooms invite you to unwind as they open onto a generous terrace, providing ample space for relaxation and entertainment.

Throughout the apartment, ambient lighting sets the perfect mood, adjustable through LED downlights and dimmer switches, creating a serene and inviting atmosphere.

With an array of amenities just moments away, including the vibrant retail scene at Battersea Power Station, you'll find yourself immersed in a world of convenience and luxury. Plus, being adjacent to the magnificent 200-acre Battersea Park, the Parkside Collection at Chelsea Bridge Wharf offers an unparalleled living experience, where every day feels like a retreat.



ONE BEDROOM APARTMENT



| Address: | | sq ft | bed | bath |
|---|-----------------|-------|-----|------|
| Parkside Apartments, Chelsea Bridge Wharf, London, SW11 | <i>internal</i> | 591 | 1 | 1 |
| | <i>balcony</i> | 57 | | |
| | <i>total</i> | 648 | | |

*** For illustration purposes only. Could not be to scale. One-London aims to ensure accuracy but is not liable for any discrepancies.*