



## Oakley House, Battersea Roof Gardens, London

£735,000

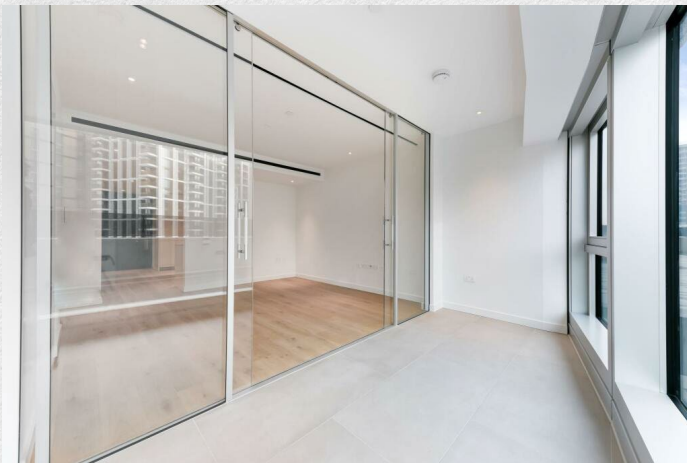
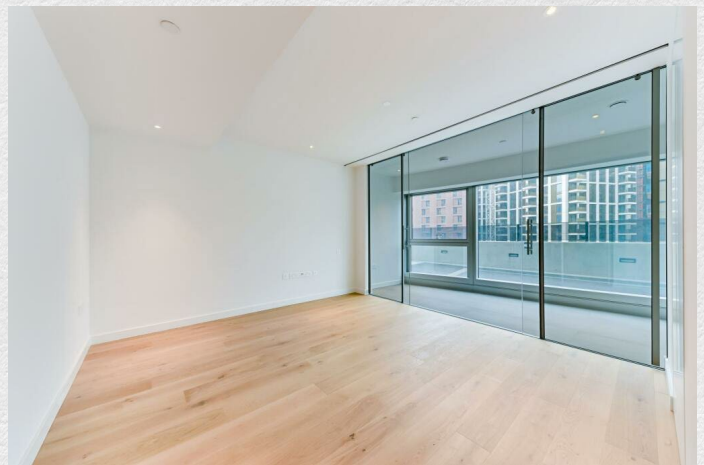
- 1 bedroom
- 1 bathroom
- 575 sq ft
- Residents Lounge and Cinema
- 24 hour concierge
- Overlooking Battersea Power Station
- Sought after location
- Great transport links
- Vibrant area

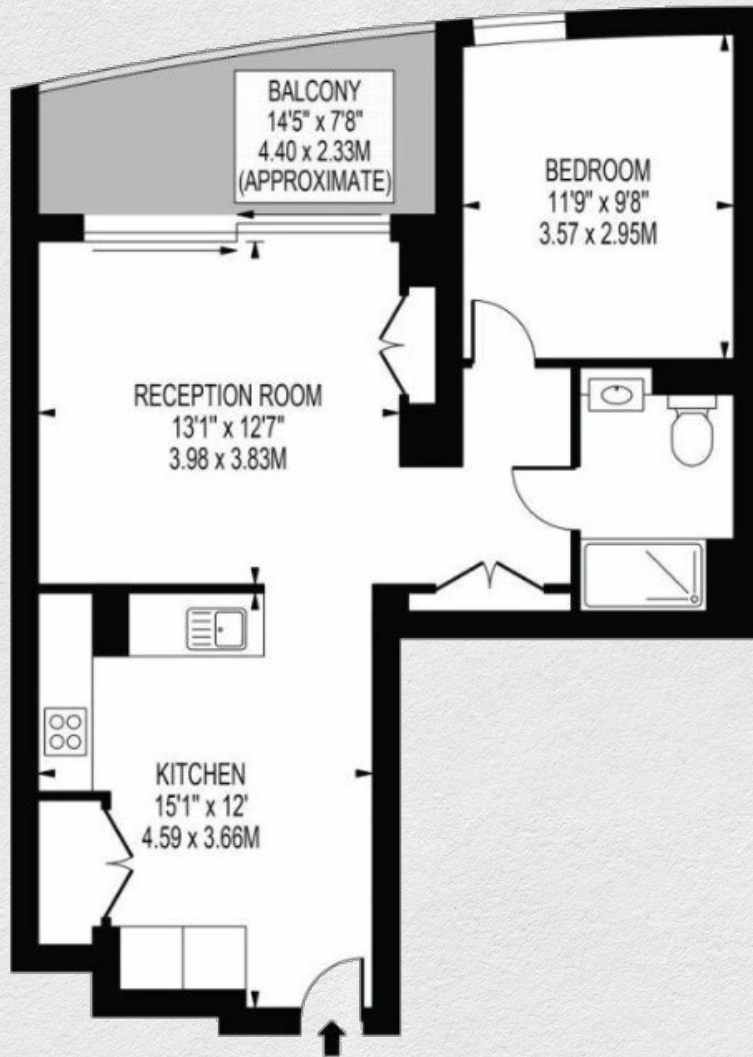
*Stunning, 1 bedroom, 1 bathroom apartment in the Foster & Partners designed Battersea Roof Gardens part of the Battersea Power Station development in London.*

*Large open plan living area leading to a large private terrace. You have a bright kitchen and dining area with a bedroom suite at the end of the hallway.*

*Ideal for entertaining, this stunning apartment offers a generous amount of external space providing amazing views of the Power Station, Malaysia Square and the Electric Boulevard. This is ready to move in.*

*Situated on the River Thames, the apartment is ideally located for Chelsea, Battersea Park and the tube, rail and Thames Clipper transport links nearby.*





Address:

Oakley House, Battersea Roof Gardens, London

sq ft

575

bed

1

bath

1

*\*\* For illustration purposes only. Could not be to scale. One-London aims to ensure accuracy but is not liable for any discrepancies.*