



Alder House, Battersea Roof Gardens, London

£7,000 pcm

Brand new, luxury 3 bedroom, 3 bathroom apartment in the iconic Battersea Power Station development.

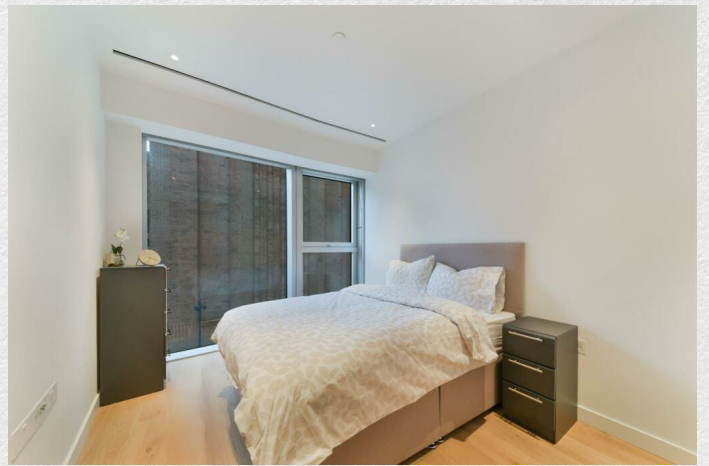
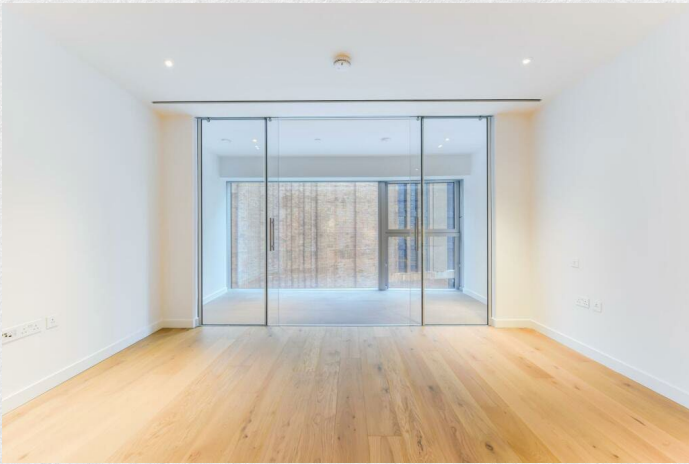
- 3 bedrooms
- 3 bathrooms
- 1,209 sq ft
- Private balcony
- Residents Lounge and Cinema
- 24 hour concierge
- Overlooking Battersea Power Station
- Sought after location
- Great transport links
- Vibrant area

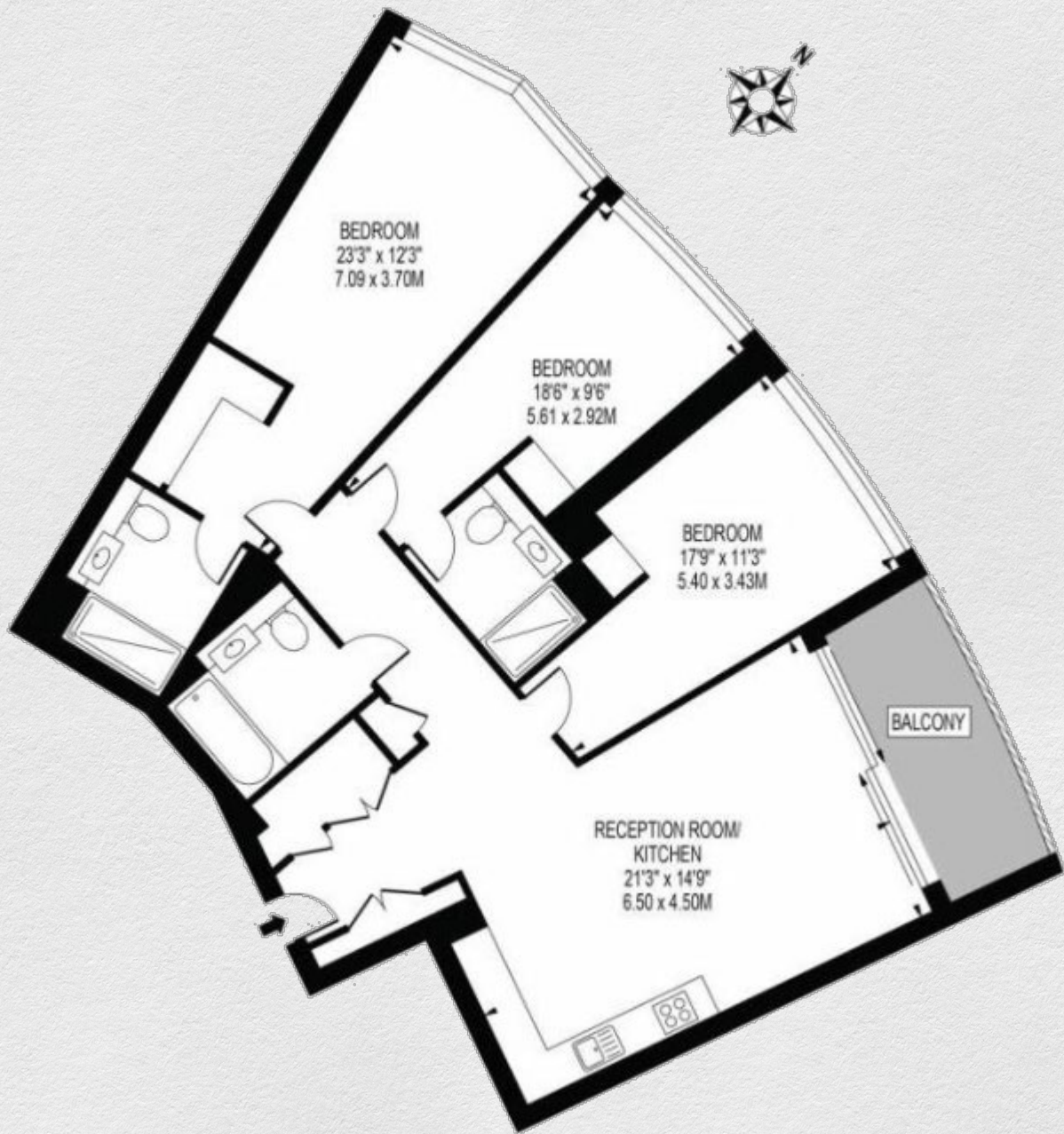
This spacious 1,209 sq ft apartment offers direct views of the iconic Battersea Power Station and Malaysia square. Residents benefit from amazing facilities - including a residents' cinema, business lounge, private dining room, games room, gym, pool and SPA.

The property comprises a large open plan reception room with stylish kitchen, winter garden with views of the Power Station, double bedroom with built-in wardrobes, further double bedroom with en-suite, large principal bedroom with en-suite as well as ample storage throughout.

This legendary London landmark and surrounding area has been brought back to life as one of the most exciting and innovative mixed use neighbourhoods in the world - a place for locals, tourists and residents to enjoy a unique blend of shops, bars, restaurants, leisure and entertainment venues, parks and historical spaces.

The Property is a short walk from both Underground and National rail stations with Battersea Power Station (Northern Line) Battersea Park (National Rail).





Address:

Alder House, Battersea Roof Gardens, London

sq ft

bed

bath

1,209

3

3

*** For illustration purposes only. Could not be to scale. One-London aims to ensure accuracy but is not liable for any discrepancies.*