



## Hampton House, London, SW6

£20,000 pcm

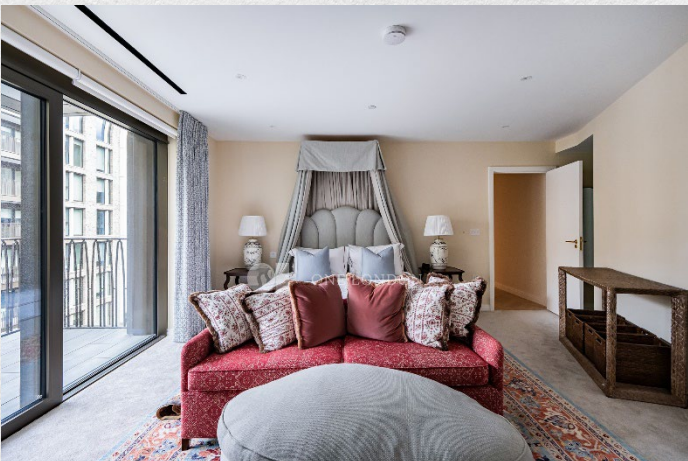
- 4 bedrooms
- 4 bathrooms
- 3 balconies
- 1,823 sq ft
- 4<sup>th</sup> floor
- World class residence amenities
- Sought after location.
- 24-hour concierge
- Great transport links

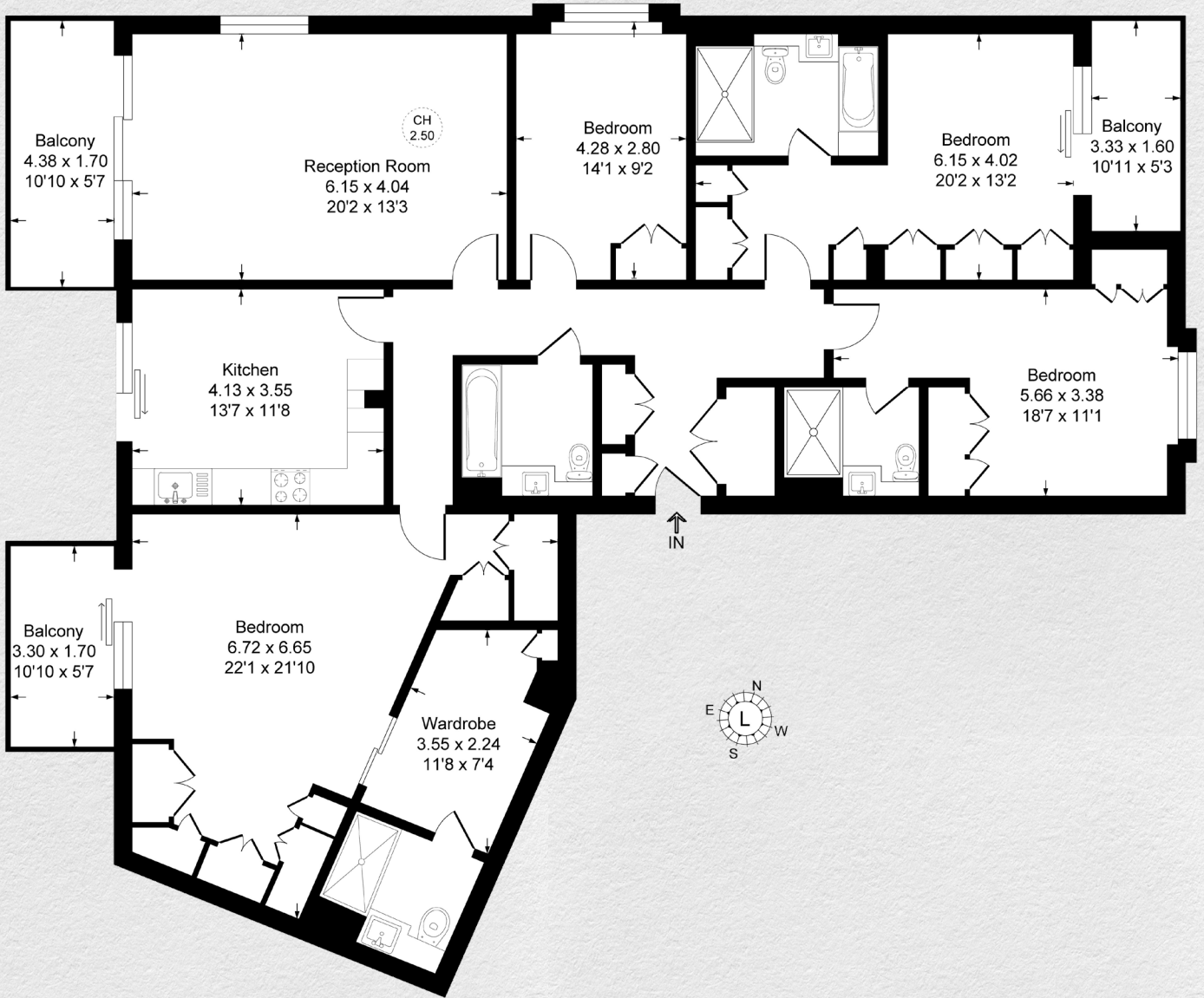
*Fabulous four-bedroom apartment located on the fourth floor of a brand new development just off the Kings Road.*

*Easily accessible via a lift, this 1,823 sq ft apartment provides stylish, contemporary living, finished to the highest specification throughout. Offering a blend of luxury and convenience, making it an ideal living space for those who appreciate modern amenities and a well-designed living environment.*

*On entry, there is ample storage space ideal for outdoor wear, and a laundry room. The luxurious, light-filled principal bedroom has a dressing area, en suite bathroom, fitted wardrobes and a private balcony. Another two bedrooms are also en-suite with fitted wardrobes. The large reception room is full of natural light with access to another balcony. The separate kitchen is fitted with modern appliances and finished to a very high standard.*

*Residents will benefit from a beautiful landscaped public park at the centre of the development, providing a significant open space for the local community. The development provides access to luxury health and fitness facilities featuring a gymnasium and studios, 25m swimming pool with vitality pool, steam room, sauna and treatment rooms. Finally, residents will enjoy private access to a cinema, golf simulator and games room.*





Address:	sq ft	bed	bath
Hampton House, London, SW6	1,823	4	4

*\*\* For illustration purposes only. Could not be to scale. One-London aims to ensure accuracy but is not liable for any discrepancies.*