



## 11<sup>th</sup> floor, Battersea Roof Gardens, Beechmore House, London

£5,100 pcm

- Available Sept 2024
- 11<sup>th</sup> floor
- 2 bedrooms
- 2 bathrooms
- Spacious dining area
- 1,058 sq ft
- Luxury residents facilities
- Sought after location
- 24 hour concierge
- Great transport links

*New, stunning 2 bedroom apartment set within a beautifully designed development benefitting from access to all hotel facilities of Art'otel including a rooftop infinity pool.*

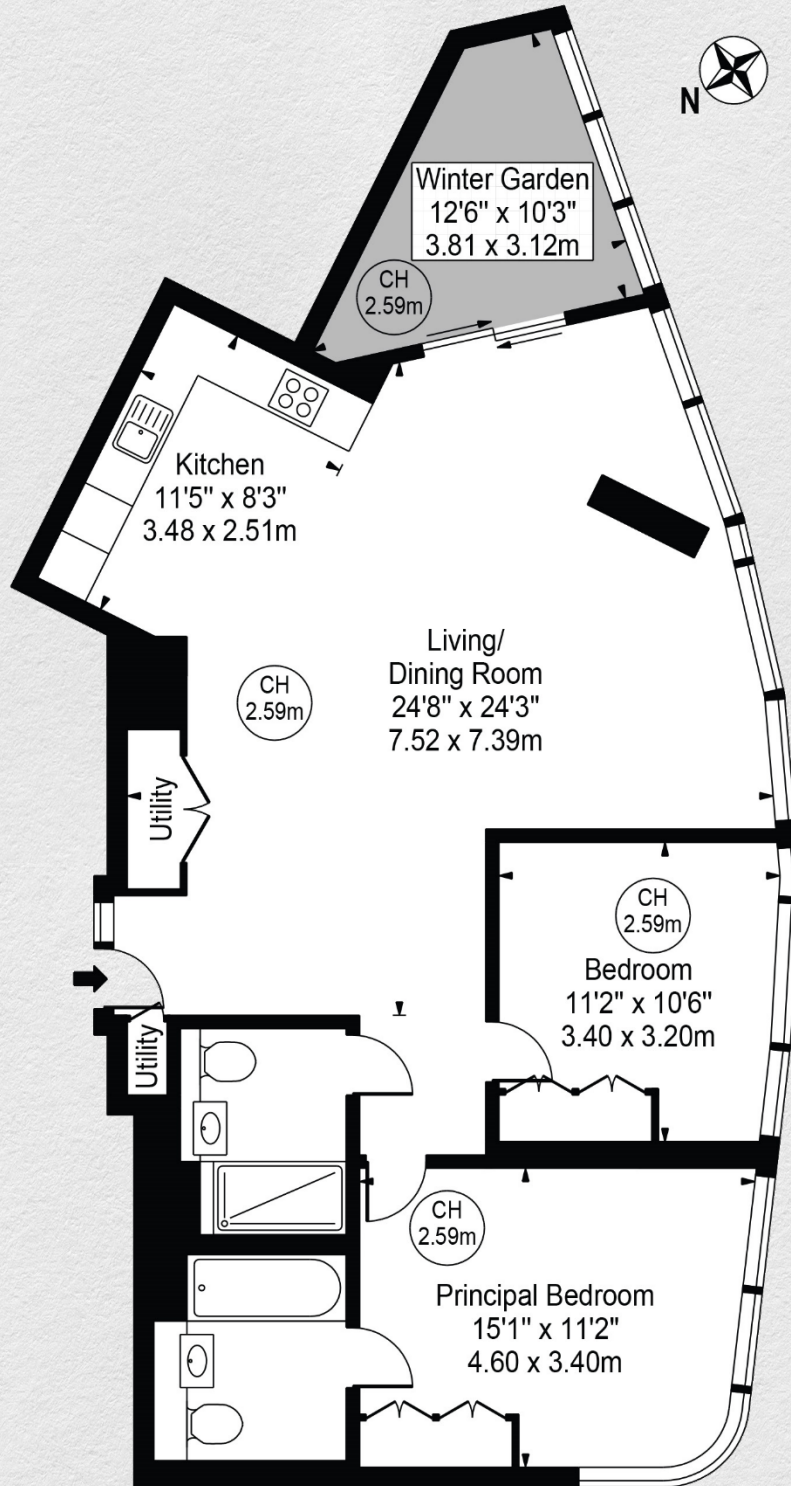
*Found on the eleventh floor of an outstanding new development set within the iconic Battersea Power Station, this apartment offers exceptional accommodation. The property opens to a spacious open-plan reception room and kitchen with modern integrated appliances and utility space. There is plenty of space for dining and entertaining and floor-to-ceiling windows with sliding doors that open to the winter garden. A door leads on to the balcony, with great views. The principal bedroom has fitted wardrobes and an en suite bathroom with luxury fixtures and fittings. The second bedroom also has fitted wardrobes. Residents of Beechmore House benefit from a 24-hour concierge, gym and swimming pool.*

*A vibrant new destination for London, housing a community of homes, shops, cafes, offices, leisure, and cultural venues, with over 19 acres of public space.*









Address:

11<sup>th</sup> floor, Battersea Road Gardens, Beechmore House, London

sq ft

bed

bath

1,058

2

2

*\*\* For illustration purposes only. Could not be to scale. One-London aims to ensure accuracy but is not liable for any discrepancies.*