



Wolfe House, Kensington High St, London, W14

£13,500 pcm

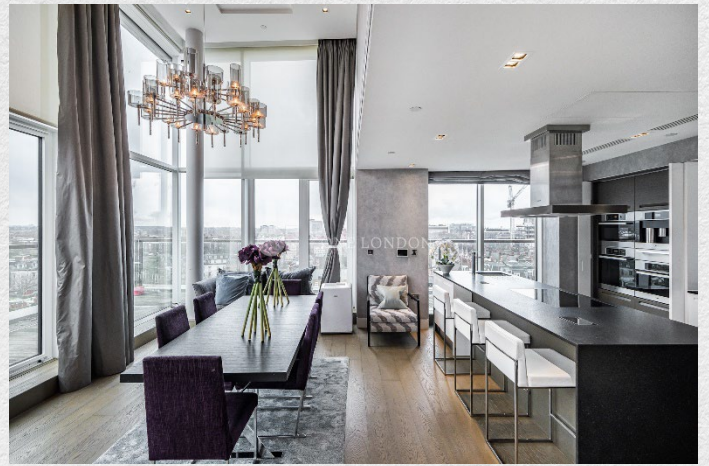
- Duplex apartment
- Secure parking available
- 3 bedrooms
- 4 bathrooms
- Large kitchen/reception room
- 2,108 sq ft
- 11th & 12th floors
- Fitted wardrobes
- Luxury residents' facilities
- Sought after location.
- 24-hour concierge
- Great transport links

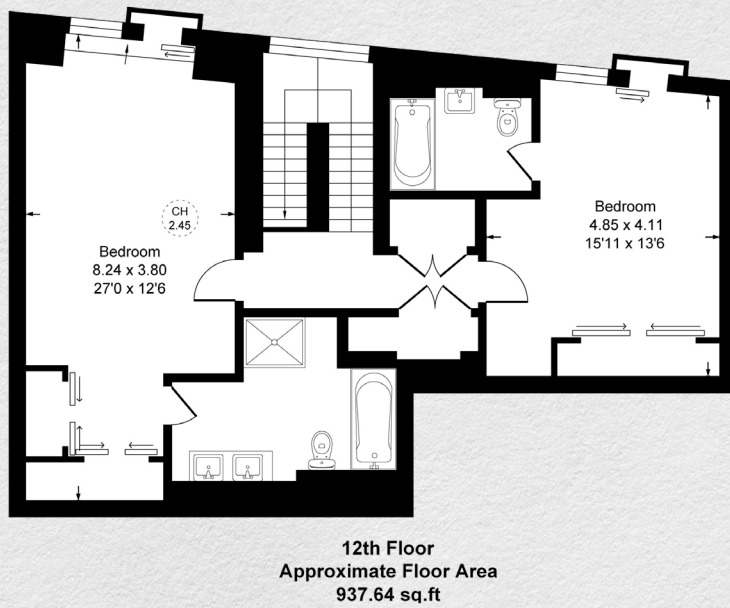
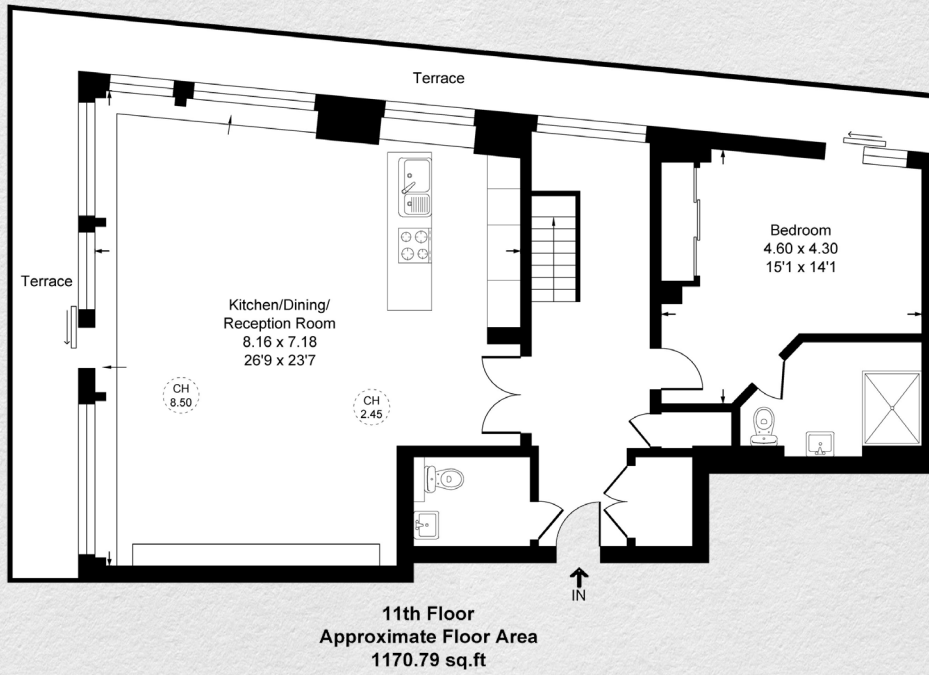
A stunning duplex apartment set high on the 11th & 12th floors in one of London's most opulent new developments in the heart of Kensington.

This very spacious 2,108 sq ft property comprises three bedrooms, four bathrooms, a large reception room with a fully fitted kitchen, all finished to a fantastic standard. With a large wrap around balcony providing spectacular views from these upper floors.

The private residents facilities really are second to none, with a swimming pool, steam room, cinema room, sauna and gym to enjoy. Parking is also included with this property.

Wolfe House is situated at the end of Kensington High Street with easy access to Kensington Olympia overland and High Street Kensington tube station. The open spaces of Holland Park are just a short stroll away.





Address:	sq ft	bed	bath
Wolfe House, Kensington High St, London, W14	2108	3	4

*** For illustration purposes only. Could not be to scale. One-London aims to ensure accuracy but is not liable for any discrepancies.*