



Ravensbourne Apartments, London, SW6

£7,500 pcm

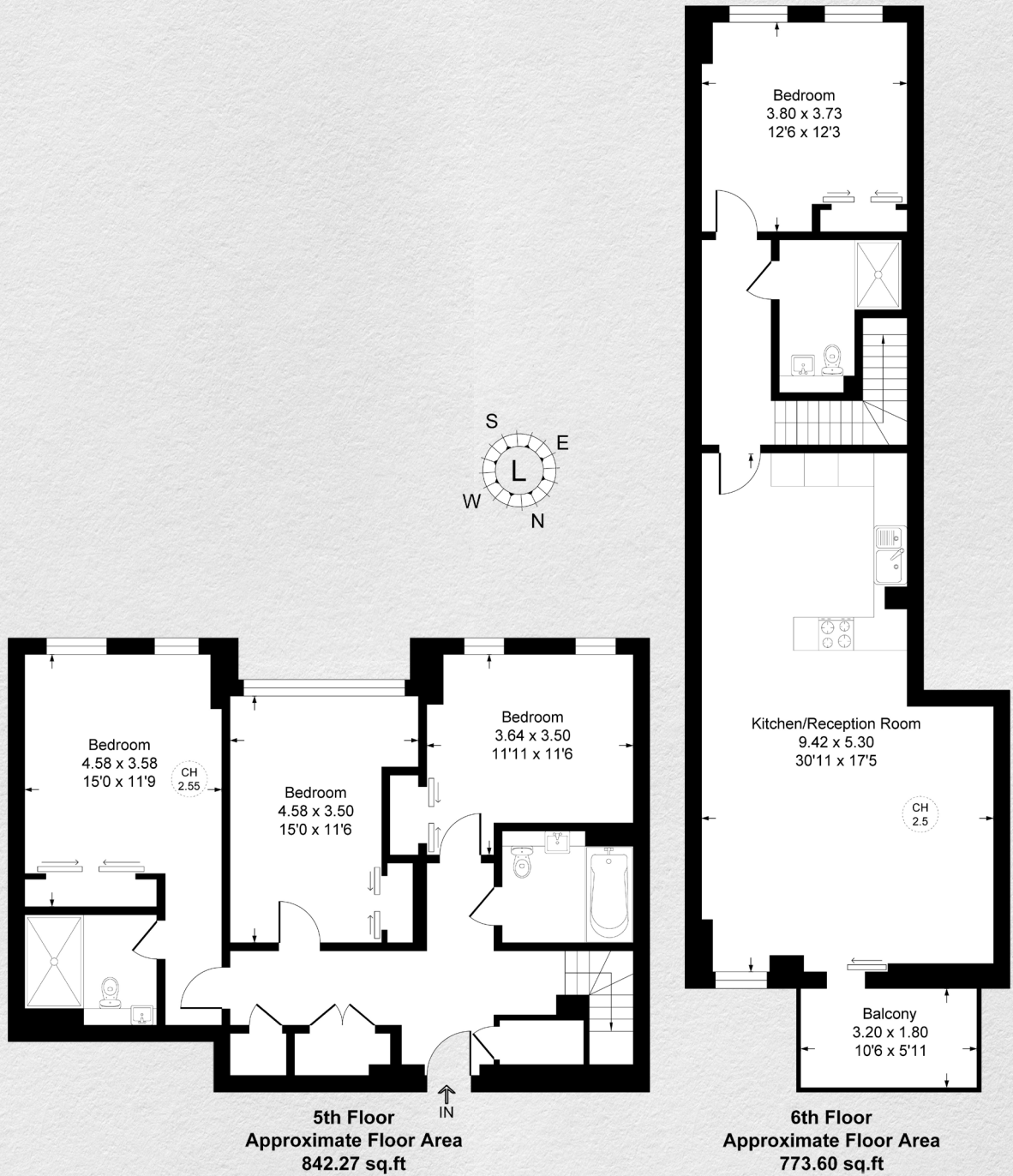
- Duplex Apartment
- 4 bedrooms
- 3 bathrooms
- Spacious reception room
- 1,616 sq ft
- 5th & 6th floors
- Fitted wardrobes
- Riverside
- 24-hour concierge
- Comfort cooling

Immaculate 4 bedroom duplex apartment in the sought after Fulham Riverside development on the banks of the River Thames.

Beautifully light and spacious throughout, the space is generously proportioned. The large open plan reception/dining room enjoys a wonderful outlook over the picturesque landscaped gardens to the river from the private balcony. The fully integrated Miele kitchen, with exquisite bespoke joinery and a high-quality finish is echoed throughout this exquisite apartment. All 4 bedrooms have fitted wardrobes, with the master bedroom being en-suite.

This modern development starts on the 4th floor and is exceptionally secure with access to the communal gardens and multiple leisure facilities. Boasting wooden flooring, underfloor heating, comfort cooling, secure underground parking for one car and 24 hour concierge.





Address:	sq ft	bed	bath
Ravensbourne Apartments, London, SW6	1,616	4	3

*** For illustration purposes only. Could not be to scale. One-London aims to ensure accuracy but is not liable for any discrepancies.*