



Cascade Court, Chelsea Bridge, London, SW11

£5,200 pcm

Very spacious dual aspect 3-bedroom apartment situated opposite Battersea Park, in The Vista, Chelsea Bridge. Available now!!

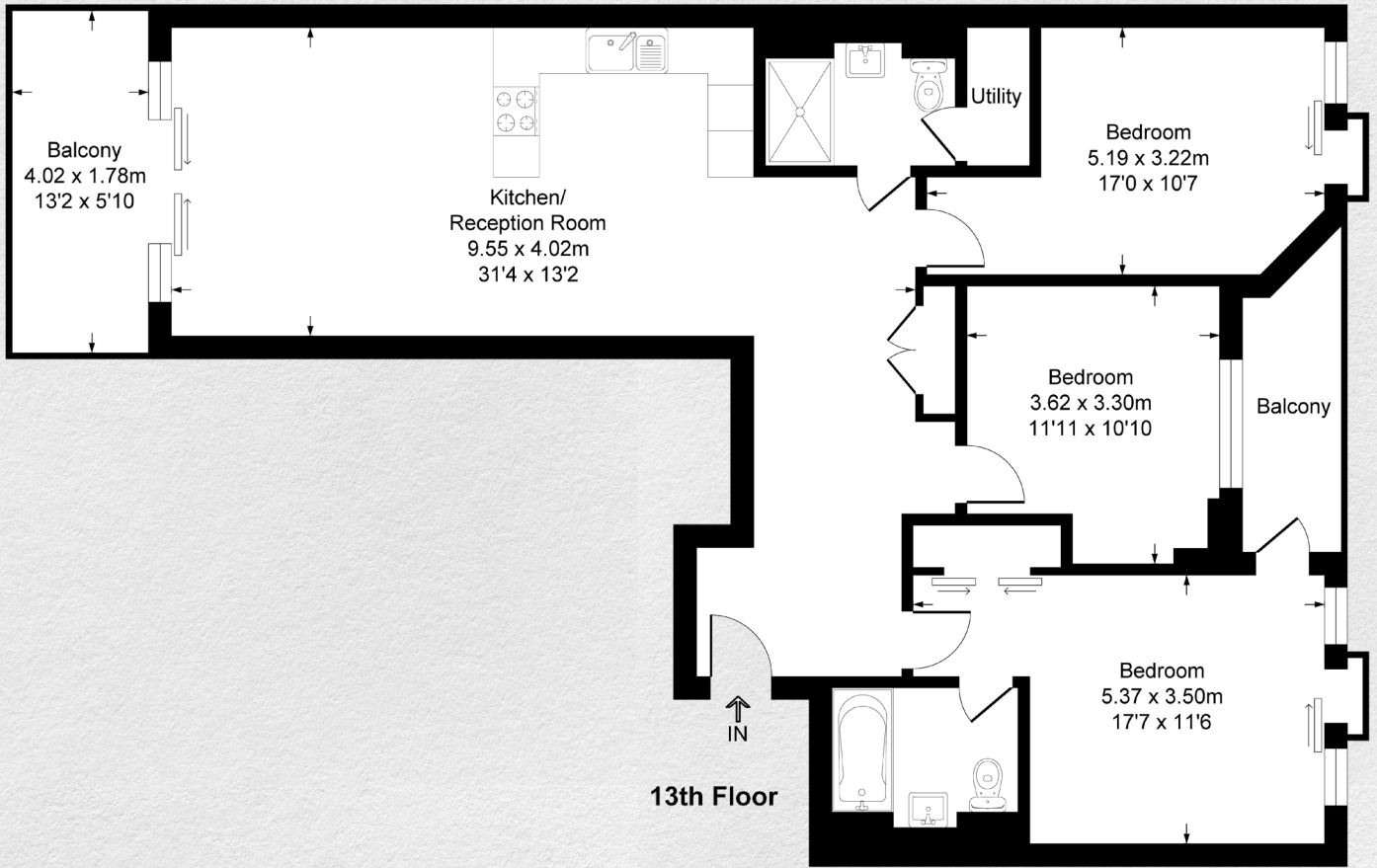
- 13th floor
- 3 large bedrooms
- 2 bathrooms
- Spacious dining area
- 2 balconies (dual aspect views)
- 1,110 sq ft
- Luxury finishings
- Luxury residents' facilities
- 24 hour concierge

This luxury 3 bed, 2 bath apartment located on the 13th floor (with lift) in Chelsea Vista includes 2 large private balconies (dual aspect views), 24/7 concierge, gym, spa, hydro pool, and luxury finishings throughout 1,110 square feet of living space.

It comprises a large master bedroom with bespoke fitted wardrobes complete with an automatic lighting system, ensuite bathroom and access to a private balcony. There are two further double bedrooms and a luxury shower room with a waterfall shower as well as excellent storage throughout. The open plan kitchen has been fully fitted with marble work surfaces and top-of-the-range Siemens appliances and the living room leads onto a private terrace through floor to ceiling windows, which looks out onto the landscaped gardens.

There are dual-aspect views over private gardens and towards Battersea Park from a private terrace. The property additionally benefits from an alarm system, lift access and concierge. Vista is located a short walk from Battersea Park and Queenstown Road overground stations and within easy reach of bus and Underground links to the City.





Address:	sq ft	bed	bath
Cascade Court, Chelsea Bridge, London SW11	1,110	3	2

*** For illustration purposes only. Could not be to scale. One-London aims to ensure accuracy but is not liable for any discrepancies.*