



Westmark Tower, Edgware Road, London, W2

£7,000 pcm

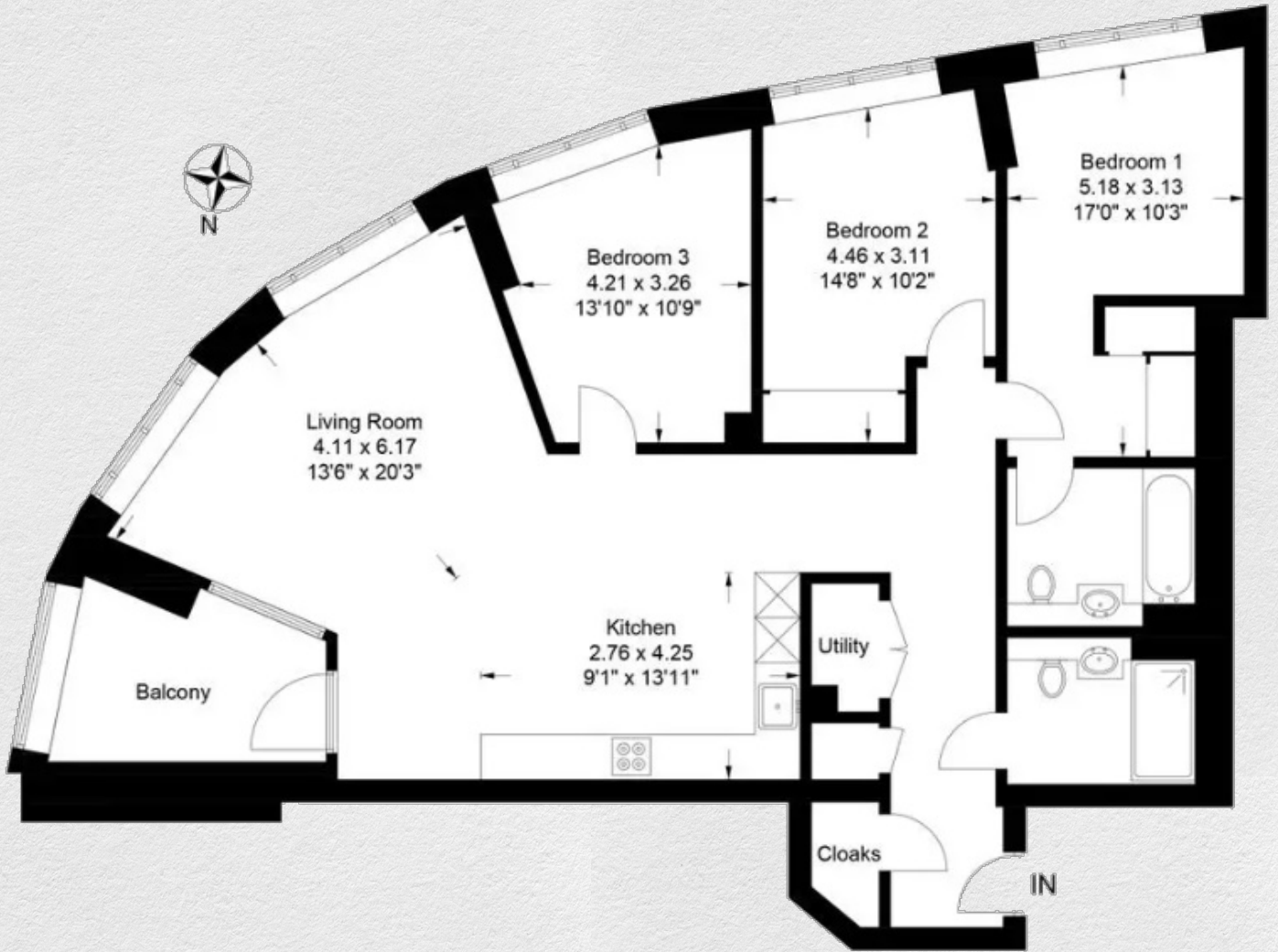
Inclusive of one parking space | 3 Bedroom Apartment Resale | 18th Floor | 1156 Sq Ft Internal Area | 54 Sq Ft Balcony | South Aspect | City and Hyde Park views | Prestigious Berkeley Development - Westmark Tower in West End Gate | 2 minute walk to Edgware Road Station | High Specification – comfort cooling | 24 Hr Concierge | Resident's Gardens | Resident's Dining Room and Lounge | Cinema Room | Swimming Pool | Steam Room | Sauna | Treatment Suite | Fully Equipped Gymnasium | Co-working spaces

Brand new 3 bedroom, 2 bathroom apartment set on the 18th floor within Westmark Tower, a part of the sought after West End Gate development, nearby all the amenities of central London. This furnished property comprises a spacious open plan kitchen/ living room with access to a private balcony, three double bedrooms and two bathrooms (master en suite).

The development benefits from 24HR concierge, secure underground parking, private resident's gym, pool and spa, cinema screening room, business lounge and resident's garden.

West End Gate is located close to the West End, Hyde Park and many transport links from Edgware Road and Paddington including the future Crossrail station for Elizabeth line trains.





Address:

Westmark Tower, West End Gate, London, W2

	sq ft	bed	bath
<i>internal</i>	1,156	3	2
<i>balcony</i>	54		

*** For illustration purposes only. Could not be to scale. One-London aims to ensure accuracy but is not liable for any discrepancies.*