



Battersea Powers Station, Switch House East

£13,500 pcm

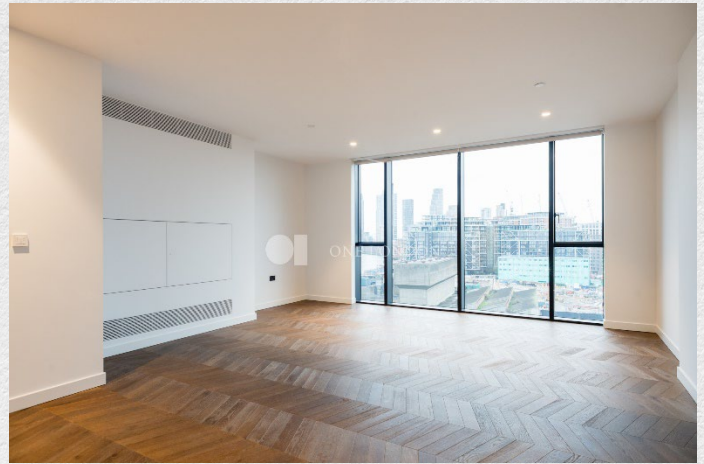
- Brand new
- 3 bedrooms
- 3 bathrooms
- 2,208 sq ft
- 7th floor with great views
- Luxury residents' facilities
- Sought after location.
- 24-hour concierge
- Great transport links

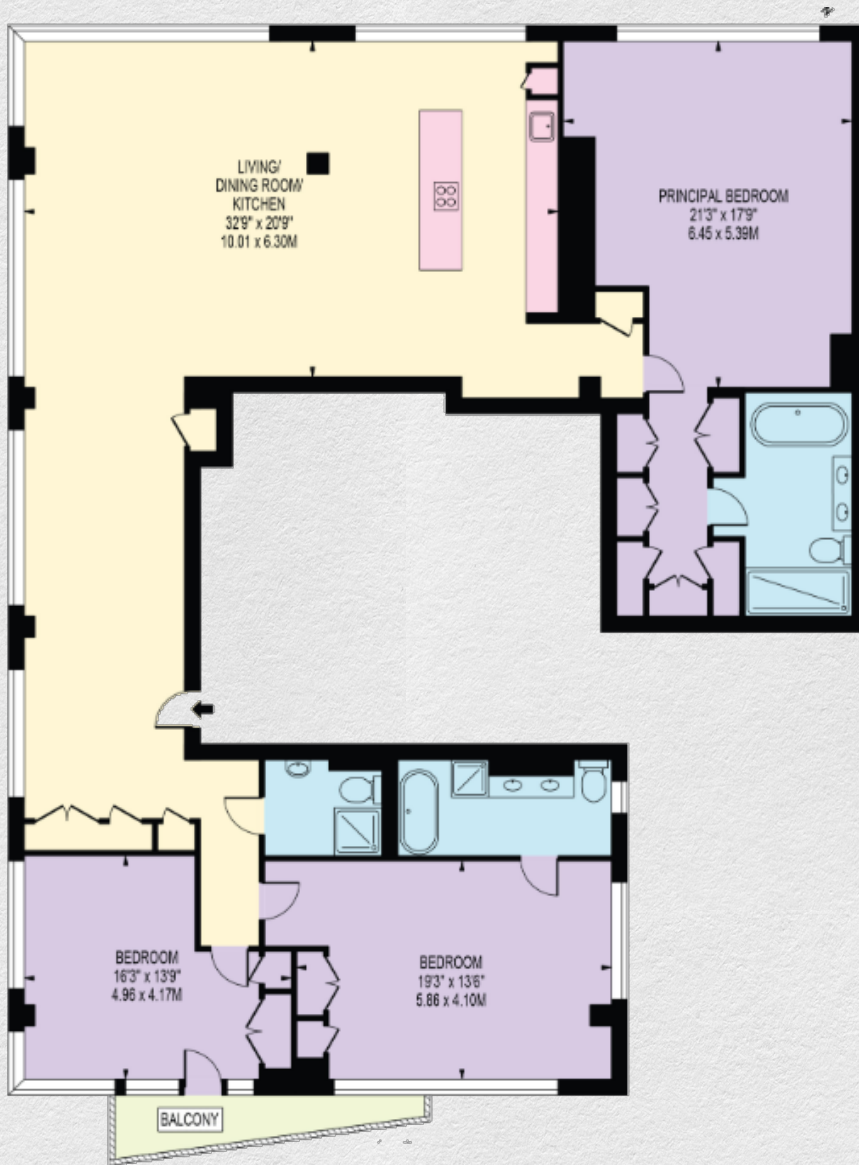
Set within the popular and newly redeveloped Battersea Power Station, this sensational 3-bedroom apartment boasts an open-plan kitchen and 3 bathrooms.

Contemporary décor, while maintaining industrial features of the Battersea Power Station. This apartment offers a generous reception room with floor-to-ceiling windows, stylish kitchen with integrated Miele appliances. 2 of the 3 bedrooms are en-suite featuring a copper bath tub and include fitted wardrobes.

Surrounded by a vibrant community and on the banks of the River Thames, this area has undergone significant redevelopment, offering a vibrant range of offices, shops, restaurants and public spaces. The iconic Battersea Power Station offers a further range of amenities, all situated moments from the River Thames.

Situated on the River Thames, the apartment is ideally located for Chelsea, Battersea Park and the tube, rail and Thames Clipper transport links nearby.





Address:	sq ft	bed	bath
Switch House East, Battersea Power Station, London	2,203	3	3

*** For illustration purposes only. Could not be to scale. One-London aims to ensure accuracy but is not liable for any discrepancies.*