



Pearson Square, Fitzrovia, London, W1T

£2,450,000

- 3 bedrooms
- 2 bathrooms
- Spacious dining area
- 1,076 sq ft
- 6th floor
- Luxury residents' facilities
- Sought after location.
- 24-hour concierge
- Great transport links

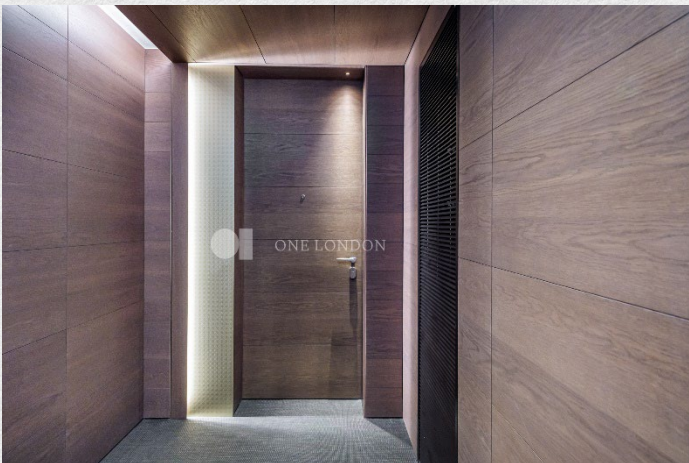
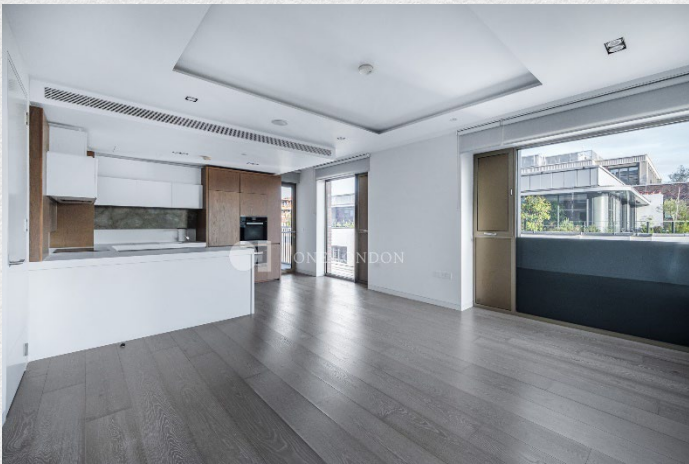
Very spacious three bedroom apartment in the desirable Fitzrovia, London.

This 1076 sq ft. apartment consists of an open plan kitchen/living room with built in Miele appliances perfect for entertaining, a dedicated study room, three large bedrooms (master en-suite) with fitted wardrobes, two stylish bathrooms and a private south-east facing balcony with great views from the sixth floor.

The stylish interior and overall design includes wooden flooring throughout and large windows allowing an abundance of natural light to flood in resulting in a bright and fresh feeling.

Residents will benefit from a wide range of amenities including 24-hour concierge, private dining room, residents' bar and lounge, screening room, gym, sauna and steam room.

The development is perfectly placed to benefit from London's vibrant culture and burgeoning art scene. From shopping on Bond Street and Oxford Street, to dining at some of the city's best restaurants, to peaceful walks in Regent's Park. There is something for everyone.





Address:	sq ft	bed	bath
Pearson Square, Fitzrovia, London, W1	1076	3	2

*** For illustration purposes only. Could not be to scale. One-London aims to ensure accuracy but is not liable for any discrepancies.*