



9 Millbank Residence, London, SW1P

£3,000,000

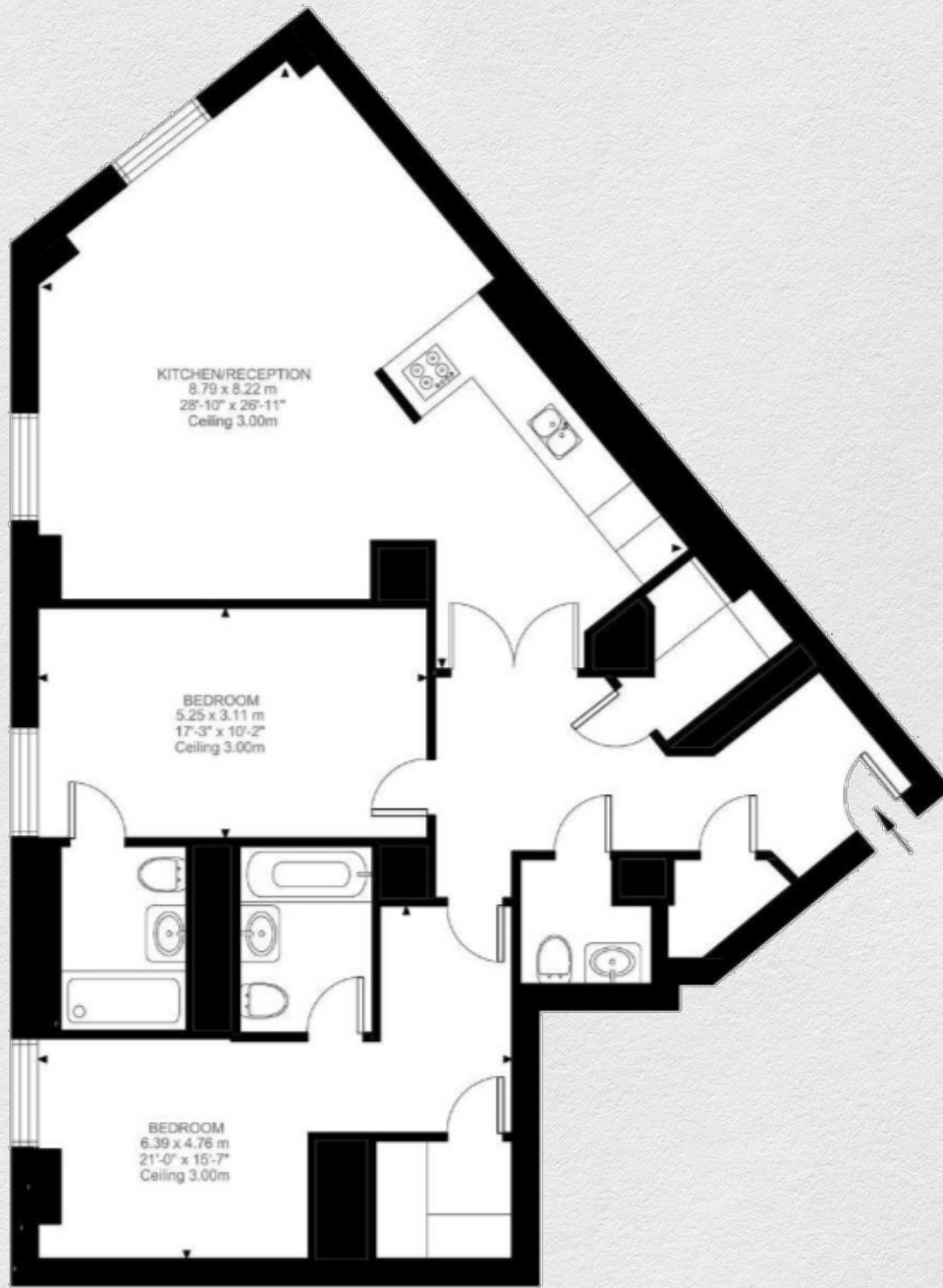
- 2 large bedrooms
- 2 bathrooms
- Separate guest bathroom
- Spacious dining area
- 1,325 sq ft
- River views
- Parking included.
- Gym, spa, steam room & pool
- 24 hour concierge
- Great transport links

This, brand new, stunning apartment in the prestigious Millbank Residence, offered furnished with parking.

The large open plan kitchen and living room has lovely views of the River Thames and boasts a spacious dining area. Located on the second floor, this 1325 square foot apartment has two double bedrooms, two bathrooms and an additional WC. The master bedroom also offers a lovely walk in wardrobe.

Within the exclusive new development there are excellent residents' amenities including a Gym, Swimming pool, spa and treatments room, cinema room and 24hr concierge. Millbank is fantastically located near to the theatres of the West End, amenities of Knightsbridge, and wonderful local restaurant. There excellent educational institutions nearby as well as the transport links of Westminster, Victoria, St James Park and Pimlico Underground and National Rail Stations.





Address:

9 Millbank Residence, London, SW1P

sq ft

1,325

bed

2

bath

2.5

*** For illustration purposes only. Could not be to scale. One-London aims to ensure accuracy but is not liable for any discrepancies.*