



North Row, Mayfair, London, W1

£2,950,000

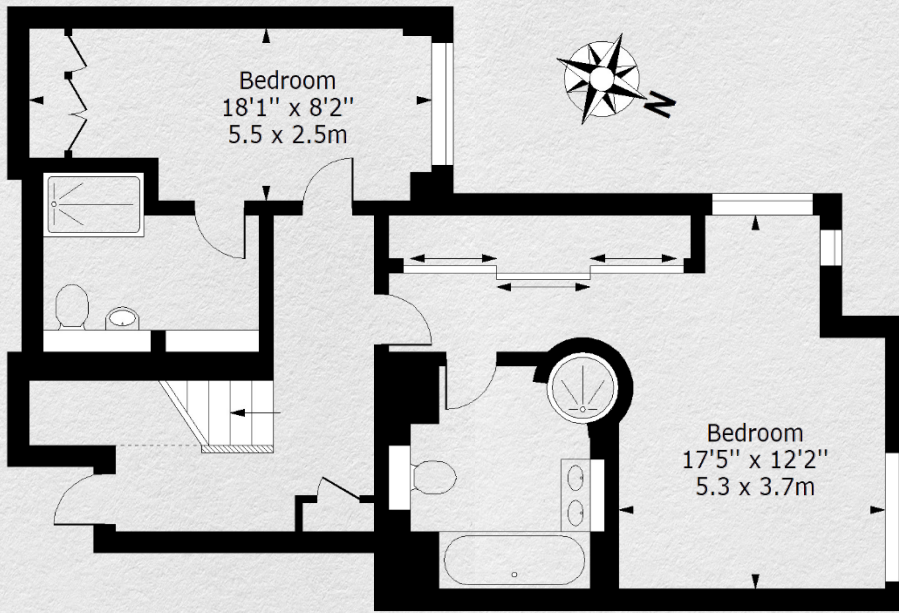
- Duplex Apartment
- 5th & 6th floors
- 2 large bedrooms
- 2 bathrooms
- Lift access
- Underground parking with a car lift
- 1,315 sq ft
- Large open plan reception space
- Great views across Mayfair
- Sought after location

Stunning 2 bedroom, 2 bathroom duplex apartment in prestigious Mayfair, London.

Located on the 5th and 6th floors with great views of the Mayfair Cityscape, this fantastic apartment consists of 2 large en-suite bedrooms, a guest washroom, an open plan living space with a separate full integrated kitchen. The floor to ceiling windows provides an abundance of natural light and fantastic views, whilst maintaining a quiet and peaceful space.

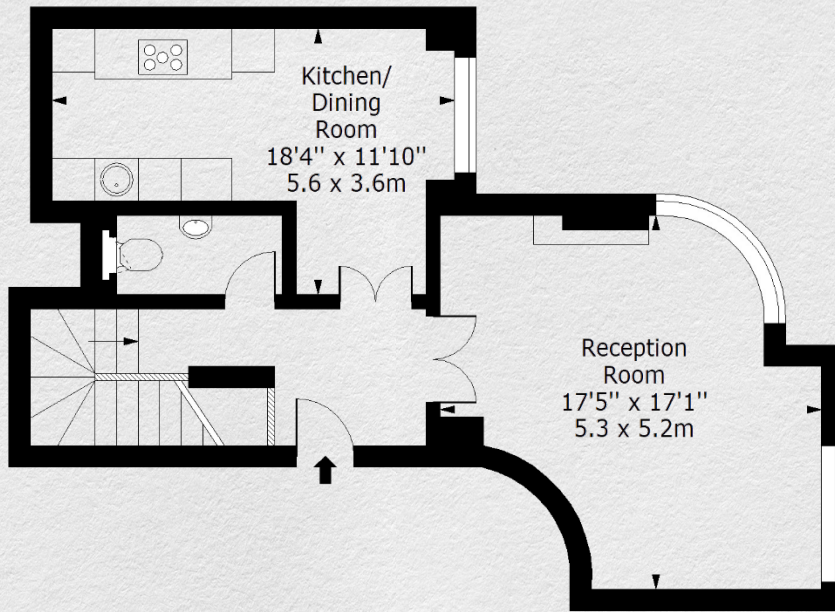
This highly sought after residential building, provides underground parking with a car lift, 24 Hour Concierge / portering & access to the Marriott Hotels swimming pool, spa / sauna & gymnasium and is a moments' walk from Hyde Park, Selfridges and Michelin Star restaurants, cafes and bars.





Fifth Floor

Floor Area 739 Sq Ft - 68.65 Sq M



Sixth Floor

Floor Area 573 Sq Ft - 53.23 Sq M

Address:

North Row, Mayfair, London, W1

sq ft

bed

bath

1,312

2

2

*** For illustration purposes only. Could not be to scale. One-London aims to ensure accuracy but is not liable for any discrepancies.*