



Penthouse – Canalside Walk, London, W2

£14,000 pcm

- 4 bedrooms
- 1 reception room
- 4 bathrooms
- 1,996 sq ft
- Balcony
- Concierge
- New Build
- Parking
- Upper floor

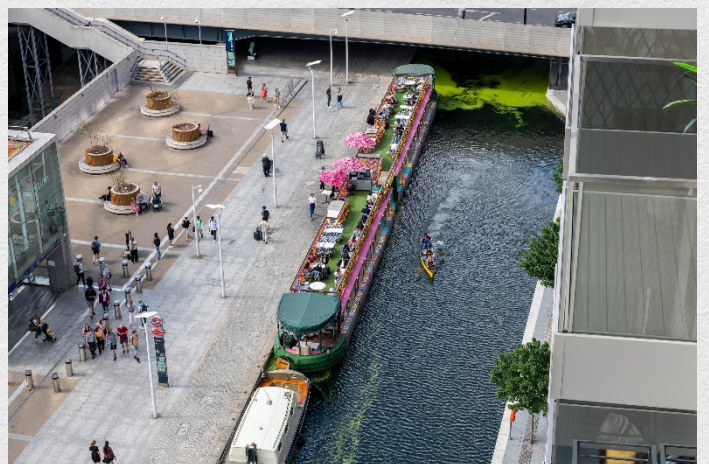
Located on the 11th floor within a newly built building in Paddington Basin, this is an exceptional four bedroom lateral apartment with stunning views across the canal, Paddington and beyond.

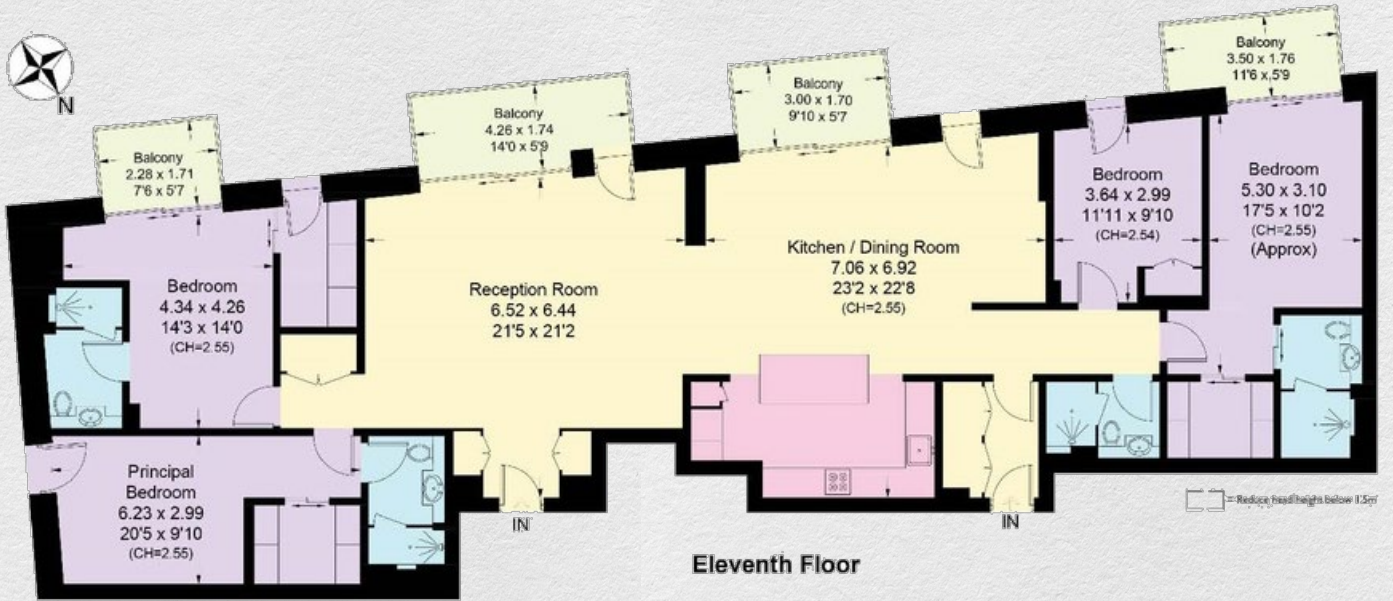
The property has an impressive front with four south west facing balconies, which allows floods of natural light throughout. The property has been finished to an extremely high specification throughout, and benefits from 2 parking spaces with electric charging points and a 24 hour concierge.

Three out of the four spacious bedrooms benefit from a walk in wardrobe and also en suite. The kitchen faces the wonderful views and benefits from integrated appliances and a free standing island, ideal to also be used as a breakfast bar.

Canalside Walk is a highly desirable location with amenities such as cafes below and entrance to Paddington station across the canal

Located in an outstanding and striking waterside location in the heart of Central London with the West End's world-class shopping, theatres and restaurants on its doorstep.





Address:

Penthouse – Canalside Walk, London, W2

sq ft

bed

bath

1,996

4

4

*** For illustration purposes only. Could not be to scale. One-London aims to ensure accuracy but is not liable for any discrepancies.*