



## Battersea Powers Station, Circus Road East, London

£3,350 pcm

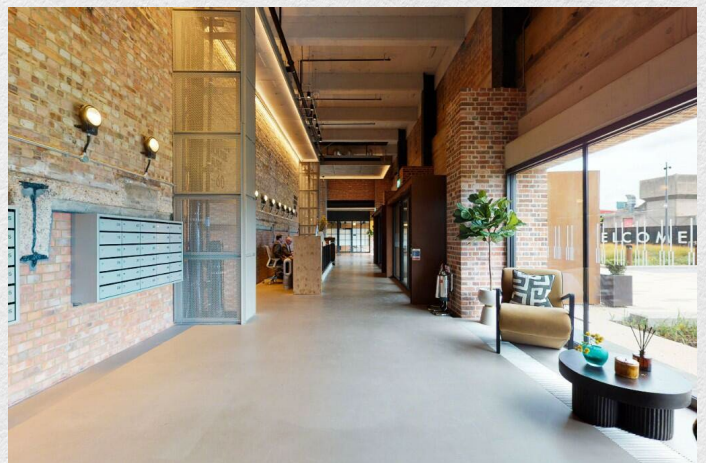
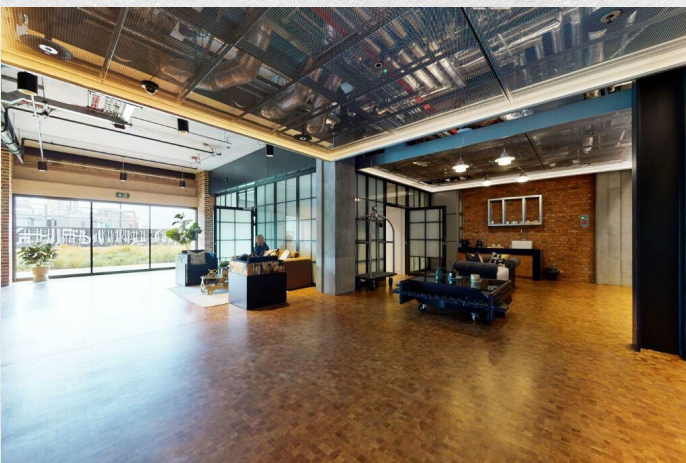
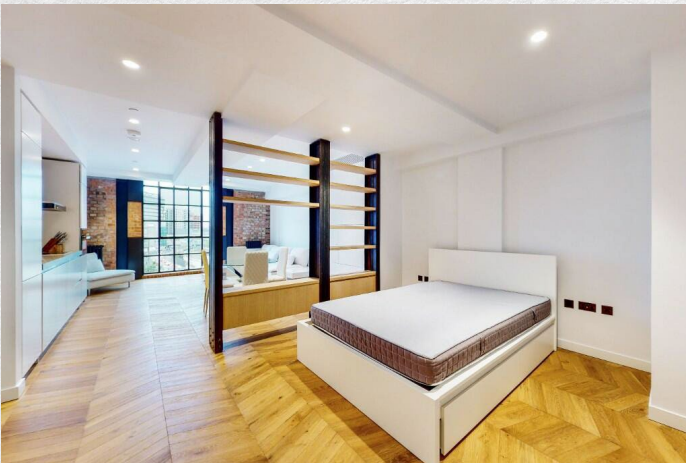
*Set within the popular and newly redeveloped Battersea Power Station, this exceptional studio apartment boasts an open-plan kitchen, and a large living area.*

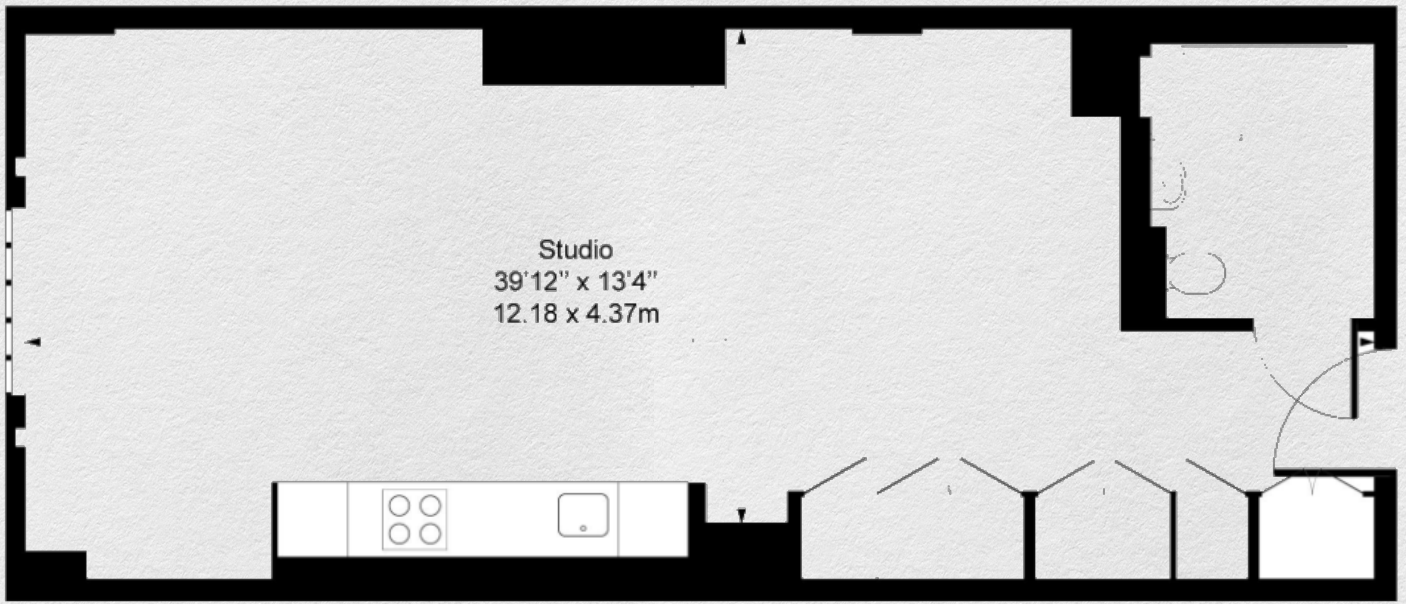
- Studio apartment
- Large living area
- 617 sq ft internal area
- Luxury residents' facilities
- Sought after location.
- 24-hour concierge
- Great transport links

*Contemporary décor, while maintaining industrial features of the Battersea Power Station. This apartment offers a generous reception room with floor-to-ceiling windows, stylish kitchen with integrated Miele appliances, private balcony terrace. The main bedroom and a second bedroom are both en suite completed to a high standard.*

*Surrounded by a vibrant community and on the banks of the River Thames, this area has undergone significant redevelopment, offering a vibrant range of offices, shops, restaurants and public spaces. The iconic Battersea Power Station offers a further range of amenities, all situated moments from the River Thames.*

*Situated on the River Thames, the apartment is ideally located for Chelsea, Battersea Park and the tube, rail and Thames Clipper transport links nearby.*





First Floor

Address:

Circus Road East, Battersea Power Station, London

sq ft

617

bed bath

studio

*\*\* For illustration purposes only. Could not be to scale. One-London aims to ensure accuracy but is not liable for any discrepancies.*