



Asquith House, West End Gate, London, W2

£935,000

- 1 bedroom
- 1 bathroom
- Spacious dining area
- 564 sq ft
- 10th floor
- Luxury residents' facilities
- Sought after location
- 24-hour concierge
- Great transport links

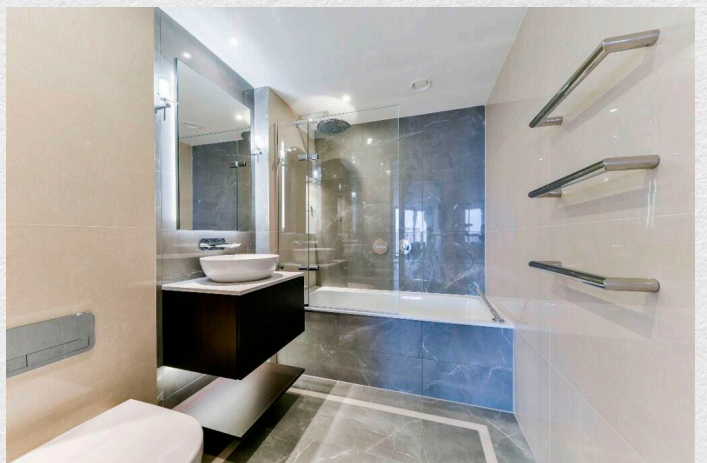
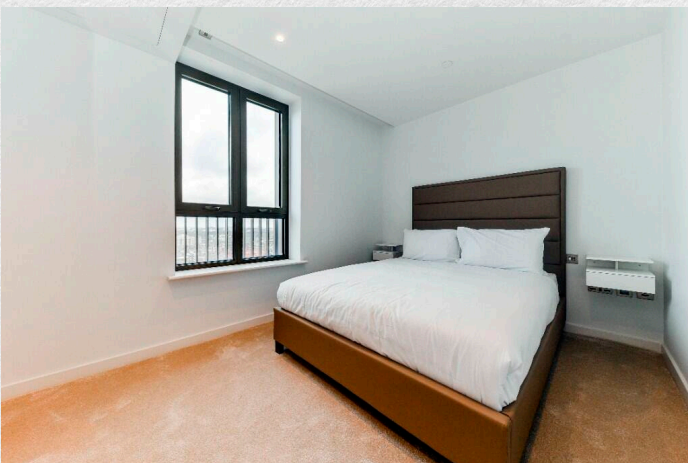
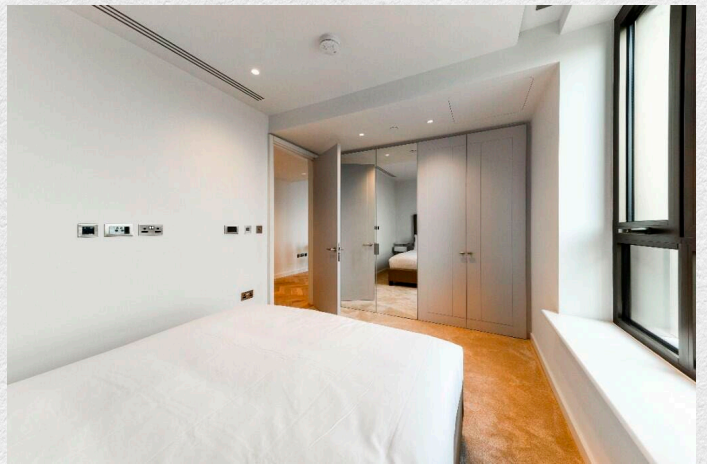
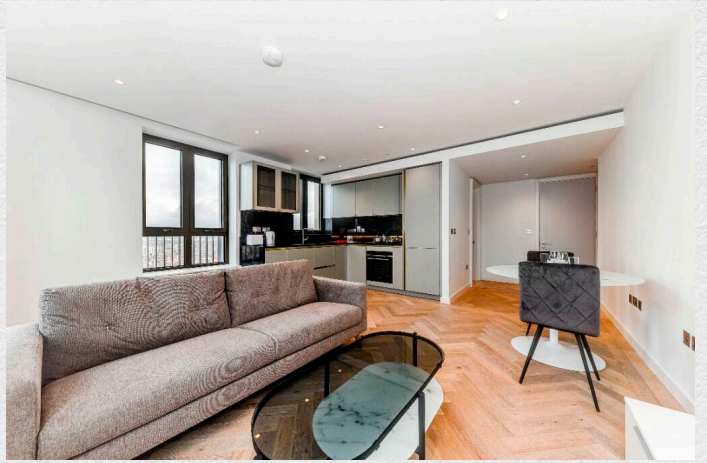
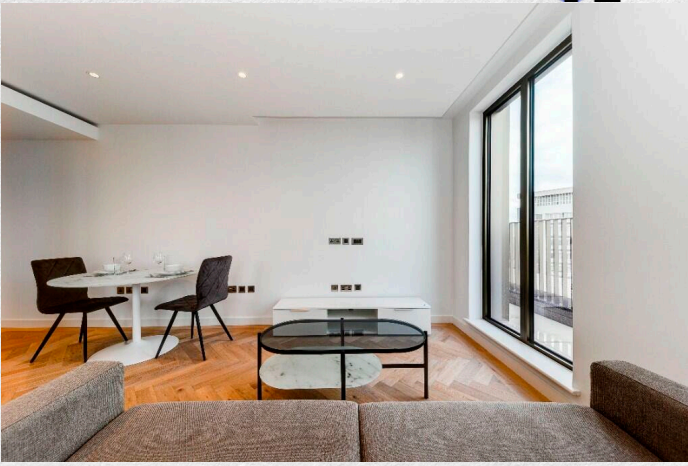
Brand new 1 bedroom, 1 bathroom apartment set on the 10th floor within Asquith House, part of the sought-after West End Gate development.

This beautifully finished apartment benefits from a spacious living/dining area, fully integrated kitchen, available storage and private balcony offering great views from the 10th floor

West End Gate is a fantastic development brought to you by renowned developer Berkeley Group. This high spec apartment offers some stunning views of Edgware Road.

The development benefits from 24HR concierge, secure underground parking, private resident's gym, pool and spa, cinema screening room, business lounge and resident's garden.

West End Gate is close to 2 minute walk to Edgware Road Station, 12 minute* walk to Paddington Station, and 13 minute* walk to Warwick Avenue Station.*





Address:	sq ft	bed	bath
Asquith House, West End Gate, London, W2	564	1	1

*** For illustration purposes only. Could not be to scale. One-London aims to ensure accuracy but is not liable for any discrepancies.*