



7th floor, Paddington Exchange, London W2

£750,000

- Brand new
- 1 bedrooms
- 1 bathrooms
- 621 sq ft
- Parking included
- Private balcony
- Upper floor
- Roof Gardens
- Luxury residents facilities
- 24 concierge
- Great transport links

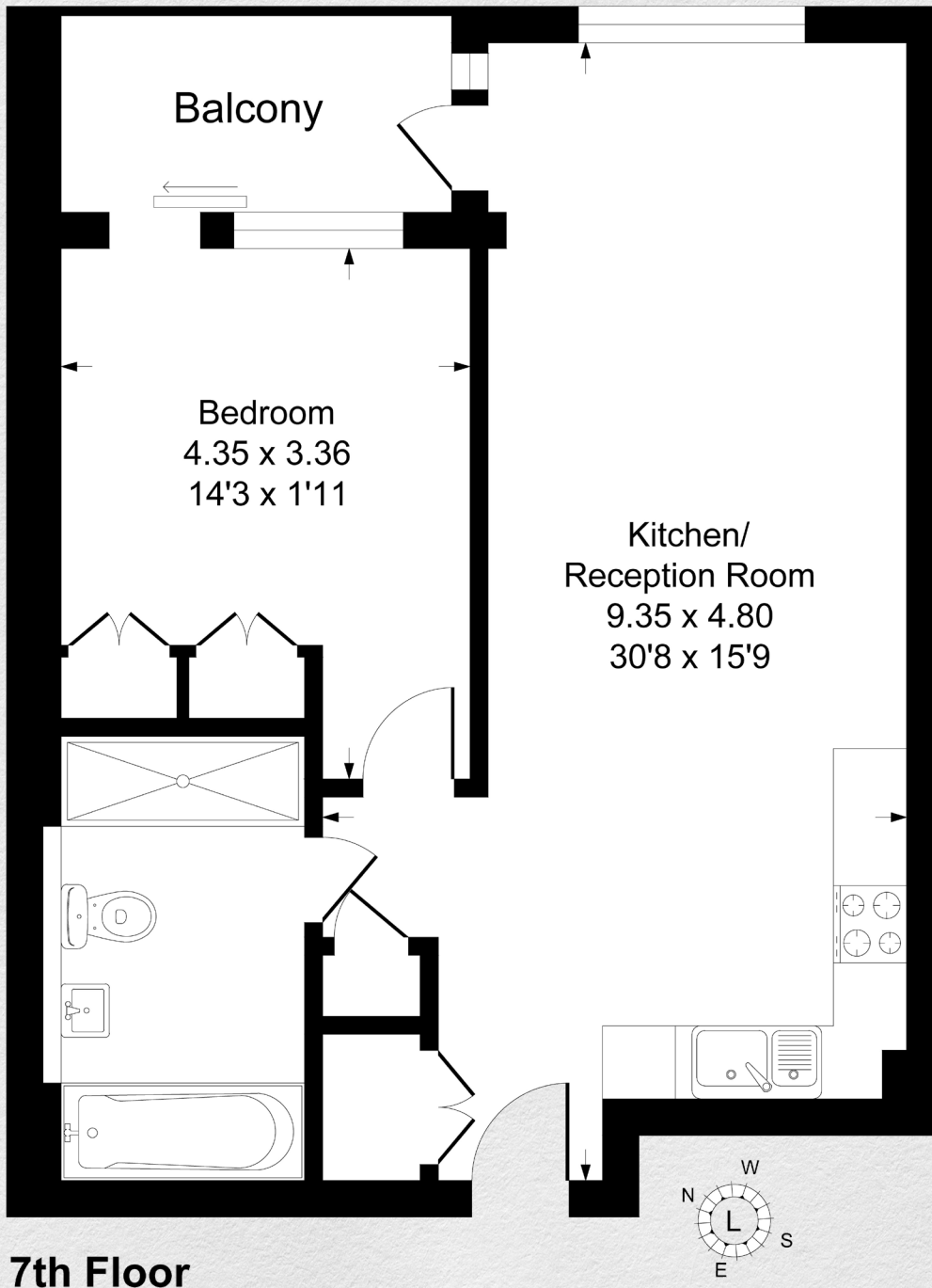
Large 1 bedroom, 1 bathroom apartment in a modern development located close to the Paddington Basin.

This 7th floor apartment offers a spacious open plan reception including an inviting living and dining area, fitted kitchen with integrated appliances, wood flooring, fitted bedroom storage, stylish bathroom suites and a large private terrace with great views from the upper floor.

There are several amenities located nearby including restaurants, cafés, pubs, shops and the green spaces of Hyde Park and Kensington Gardens. The development is located a short distance from Edgware Road Underground station, providing a valuable transport link for commutes to prominent destinations located across the Capital.

The development is also within walking distance to the bars, cafes and restaurants within Paddington Basin, Little Venice and Sheldon Square





Address:

7th floor, Paddington Exchange, London, W2

sq ft

bed

bath

621

1

1

*** For illustration purposes only. Could not be to scale. One-London aims to ensure accuracy but is not liable for any discrepancies.*