



## Rosewood Building, London, E2

£3,500 pcm

- Brand new
- 2 bedrooms
- 2 bathrooms
- Spacious reception area
- Private balcony
- 653 sq ft
- Separate utility room
- Residents roof gardens
- Luxury residents' facilities
- Sought after location
- 24-hour concierge
- Great transport links

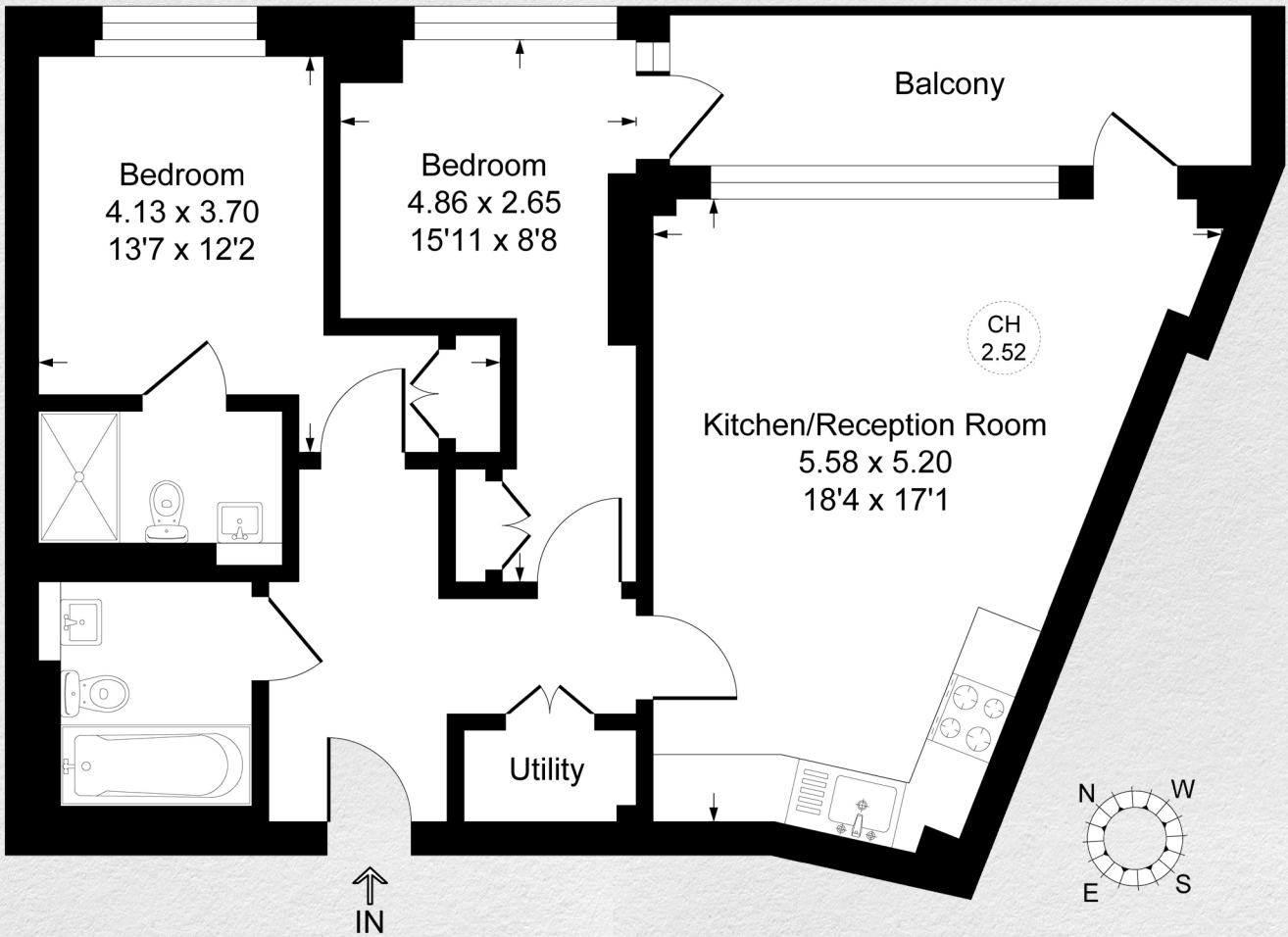
*Recently built two bedroom, two bathroom apartment situated on the 6th floor in the highly anticipated Rosewood Building, Shoreditch Exchange, E2 Shoreditch Exchange on the 6th floor.*

*This furnished property comprises of a great sized reception room with an open plan kitchen with integrated appliances, two double bedrooms with fitted wardrobes, two luxury bathroom suites and access to a good sized private balcony. Further benefits include floor to ceiling windows providing plenty of natural light, high quality flooring and neutral décor.*

*Residents can enjoy a choice of public open spaces and an array of private amenities - including state-of-the-art gym, cinema room, 24-hour concierge, residents' club lounge and landscaped roof terraces with amazing views of London.*

*The development is moments from Hoxton station (0.1 mile), well situated for the City of London and in the heart of Shoreditch. Other benefits include 24 hour concierge, on site gymnasium and private cinema, along with a rooftop terrace.*





**Sixth Floor**

Address:	sq ft	bed	bath
Rosewood Building, London E2	653	2	2

*\*\* For illustration purposes only. Could not be to scale. One-London aims to ensure accuracy but is not liable for any discrepancies.*