



Battersea Powers Station, Switch House East

£12,350 pcm

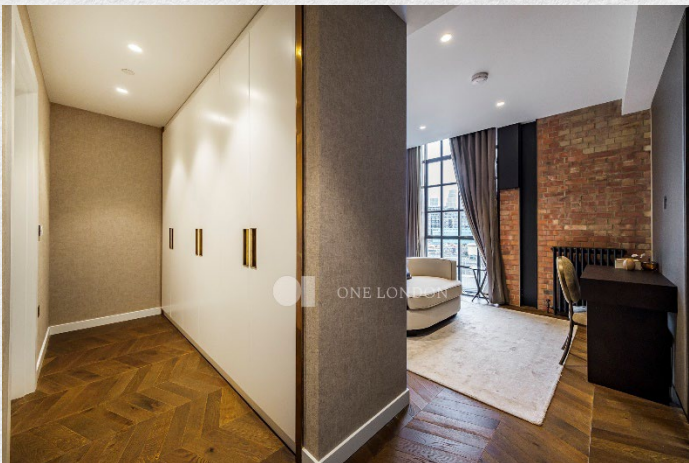
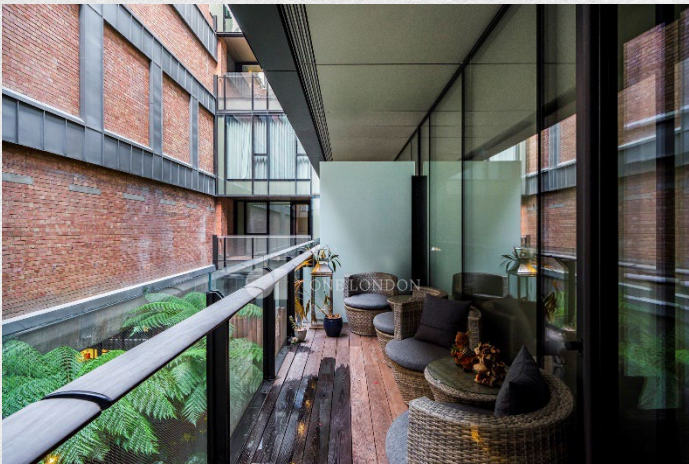
- Brand new
- Duplex apartment
- 3 large bedrooms
- 3 bathrooms
- 1,991 sq ft
- 2nd & 3rd floors
- Luxury residents' facilities
- Sought after location.
- 24-hour concierge
- Great transport links

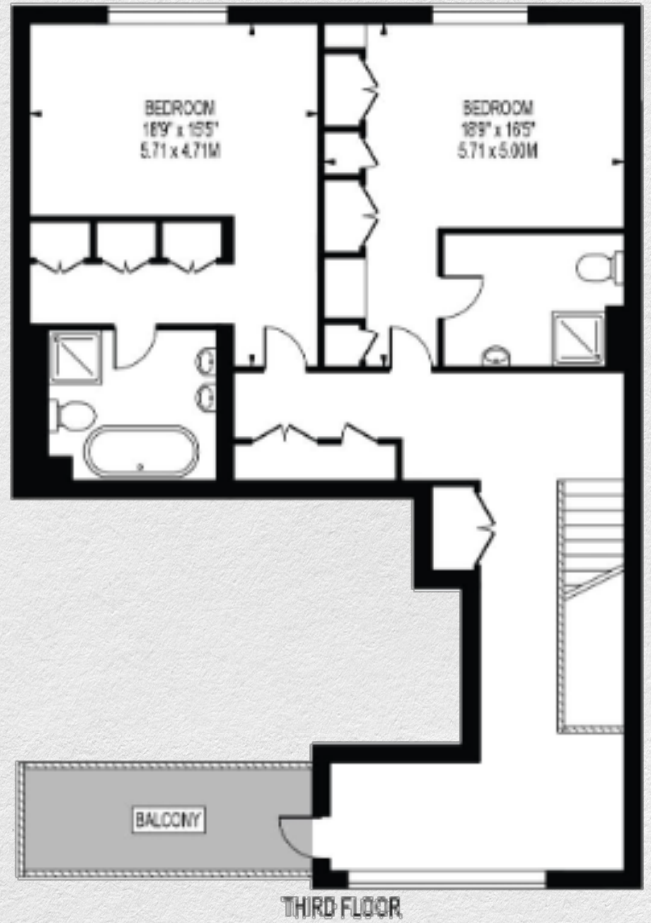
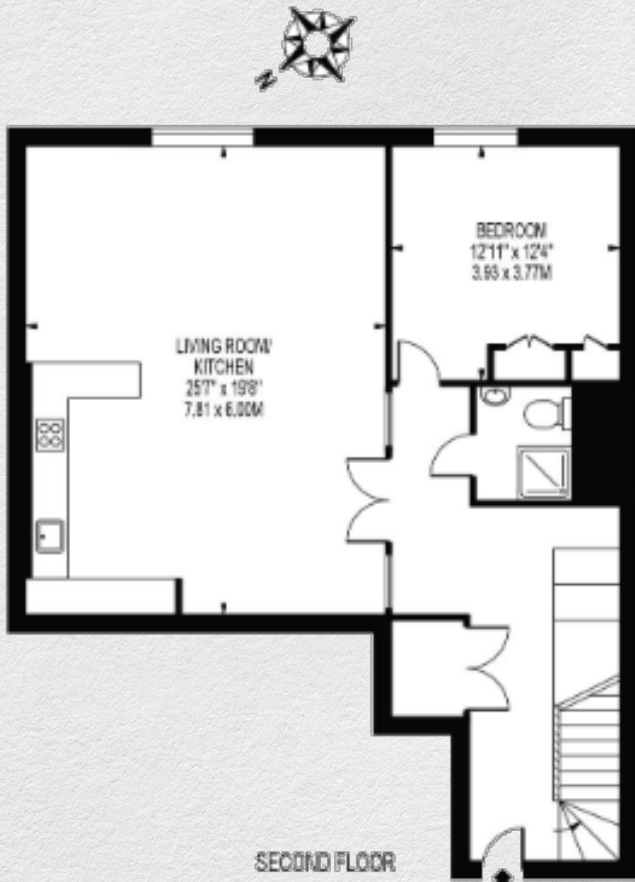
Set within the popular and newly redeveloped Battersea Power Station, this sensational 3-bedroom duplex apartment boasts an open-plan kitchen and 3 bathrooms.

Contemporary décor, while maintaining industrial features of the Battersea Power Station. This apartment offers a generous reception room with floor-to-ceiling windows, stylish kitchen with integrated Miele appliances. 2 of the 3 bedrooms are en-suite featuring a copper bath tub and include fitted wardrobes.

Surrounded by a vibrant community and on the banks of the River Thames, this area has undergone significant redevelopment, offering a vibrant range of offices, shops, restaurants and public spaces. The iconic Battersea Power Station offers a further range of amenities, all situated moments from the River Thames.

Situated on the River Thames, the apartment is ideally located for Chelsea, Battersea Park and the tube, rail and Thames Clipper transport links nearby.





Address:

Switch House East, Battersea Power Station,
London

sq ft

1,991

bed

3

bath

3

*** For illustration purposes only. Could not be to scale. One-London aims to ensure accuracy but is not liable for any discrepancies.*