



Phoenix Court, Oval Village, London, SE11

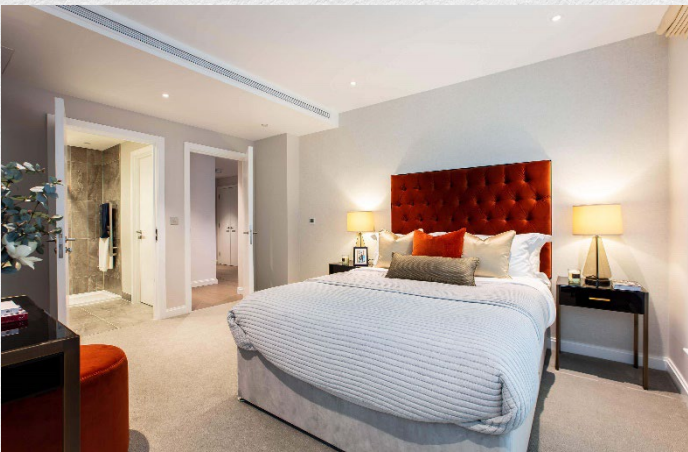
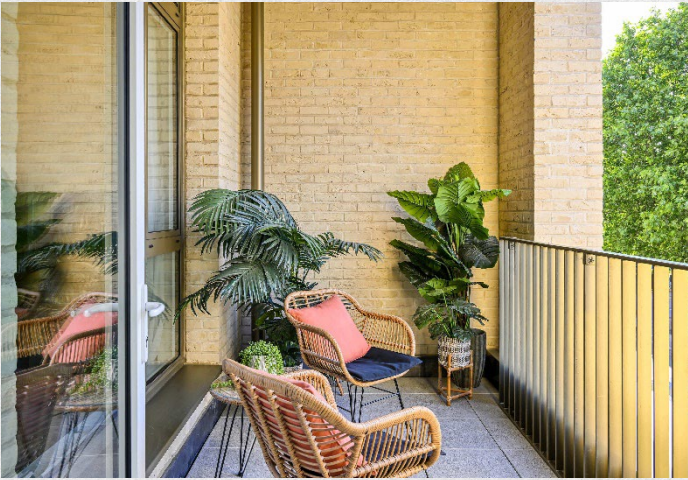
£1,000,000

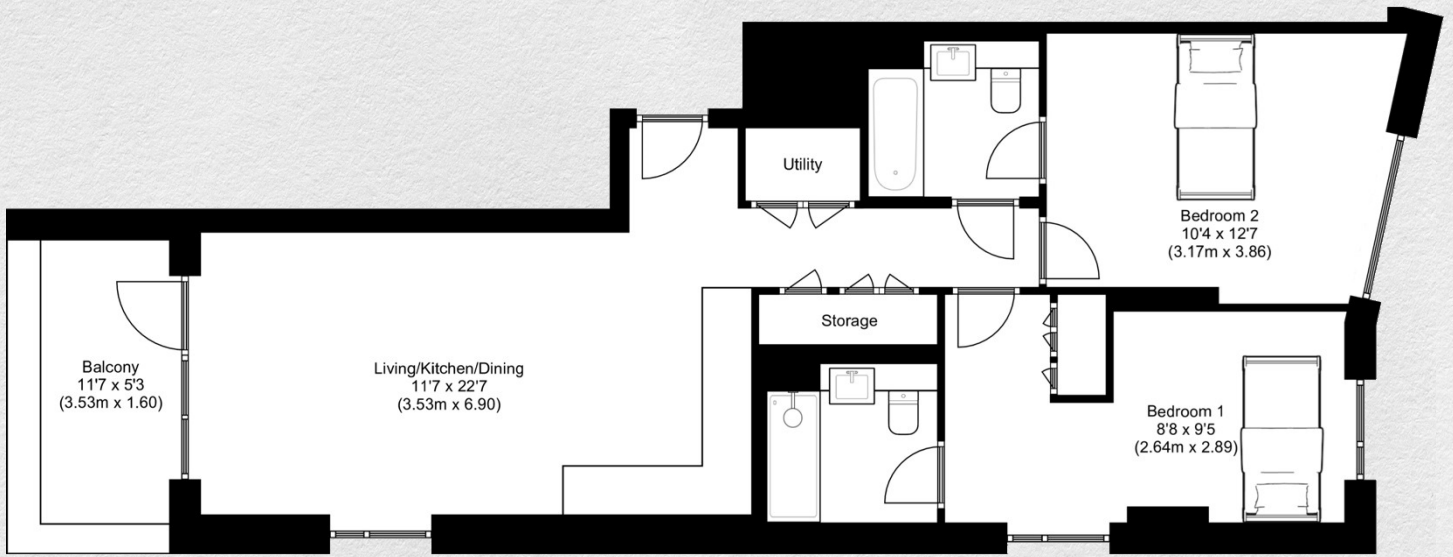
- Re-sale property
- 2 bedrooms
- 2 bathrooms
- 841 sq ft
- Private balcony
- Great views across London
- Sought after location
- Luxury residents' facilities
- Great transport links
- 24-hour Concierge

Stunning 2 bed 2 bath apartment for sale in the sought after Phoenix Court, part of the Oval Village development.

Featuring 2 bedrooms and 2 bathrooms, including a sleek ensuite, this residence provides an abundance of space and comfort. A beautifully designed interior is echoed in its sophistication at every turn. The open-plan layout connects the living, dining, and kitchen areas, creating an inviting atmosphere for both relaxing and entertaining. The private balcony allows you to enjoy the breath-taking views while enjoying your morning coffee or hosting intimate gatherings with friends and loved ones.

This exquisite residence offers the perfect blend of style, convenience, and luxury, presenting a remarkable opportunity for those seeking a premium lifestyle. With beautifully landscaped gardens, this property grants you access to residents' roof terrace, allowing you to enjoy the tranquil surroundings. Rising impressively to 16 storeys, the south core of Phoenix Court treats you to magnificent panoramic views of both The City and the revered Oval Cricket Ground.





Address:

Pheonix Court, Oval Village, London, SE11

sq ft

bed

bath

841

2

2

*** For illustration purposes only. Could not be to scale. One-London aims to ensure accuracy but is not liable for any discrepancies.*