



Battersea Powers Station, Switch House East

£6,000 pcm

- 1 bedroom
- 1 bathroom
- Spacious dining area
- 873 sq ft
- 843 sq ft roof terrace
- Luxury residents facilities
- Sought after location
- 24 hour concierge
- Great transport links

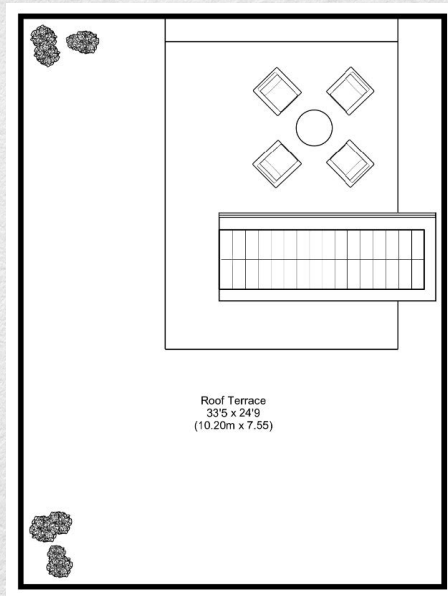
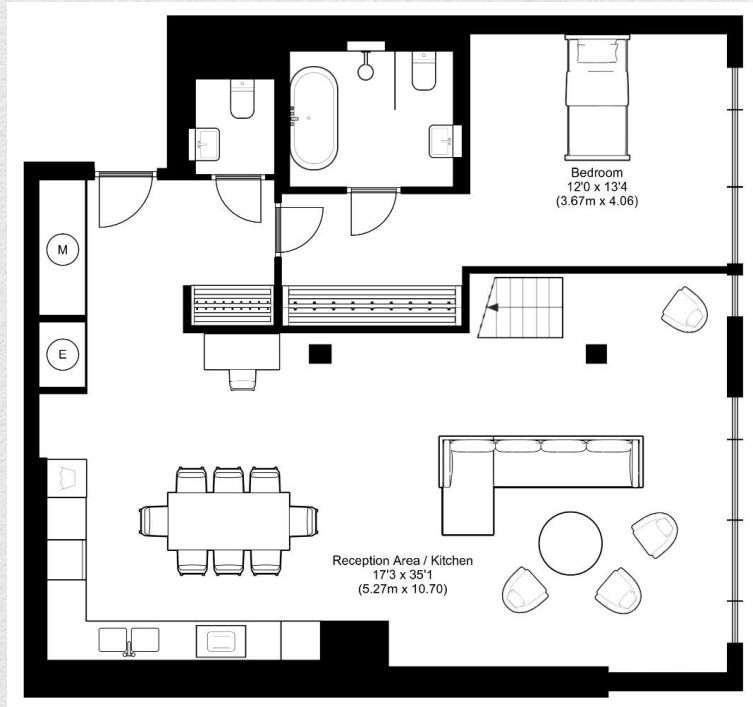
Very spacious one bedroom apartment with a large private roof terrace in the highly sought after Battersea Power Station development.

This 873 sq ft. apartment consists of an open plan kitchen/living room with built in Miele appliances perfect for entertaining. The entrance hall provides excellent storage and a separate W/C and leads into a double bedroom with built in wardrobes and en suite shower room. The apartment offers stylish features such as exposed brickwork with modern finishes to both kitchen and bathroom. The history of Battersea Power Station can be felt in the architecture of this apartment.

Set within the award-winning riverside development of Battersea Power Station, residents benefit from excellent on site amenities including a 24 hour concierge, a residents' lounge and landscaped rooftop gardens with views of the chimneys.

Situated on the River Thames, the apartment is ideally located for Chelsea, Battersea Park and the tube, rail and Thames Clipper transport links nearby.





Address:

Switch House West, Battersea Power Station, London

	sq ft	bed	bath
<i>internal</i>	873	1	1
<i>roof terrace</i>	843		

*** For illustration purposes only. Could not be to scale. One-London aims to ensure accuracy but is not liable for any discrepancies.*