



Battersea Powers Station, Switch House West

£1,100 per week

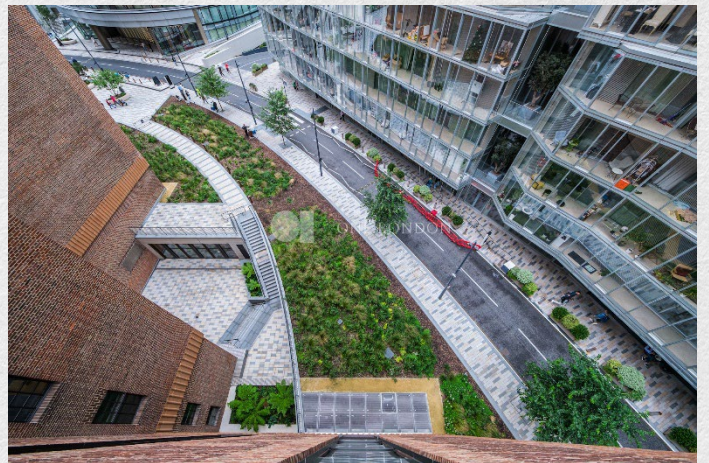
- 1 bedroom
- 2 bathroom
- Spacious dining area
- 869 sq ft
- Upper floor
- Luxury residents facilities
- Sought after location
- 24 hour concierge
- Great transport links

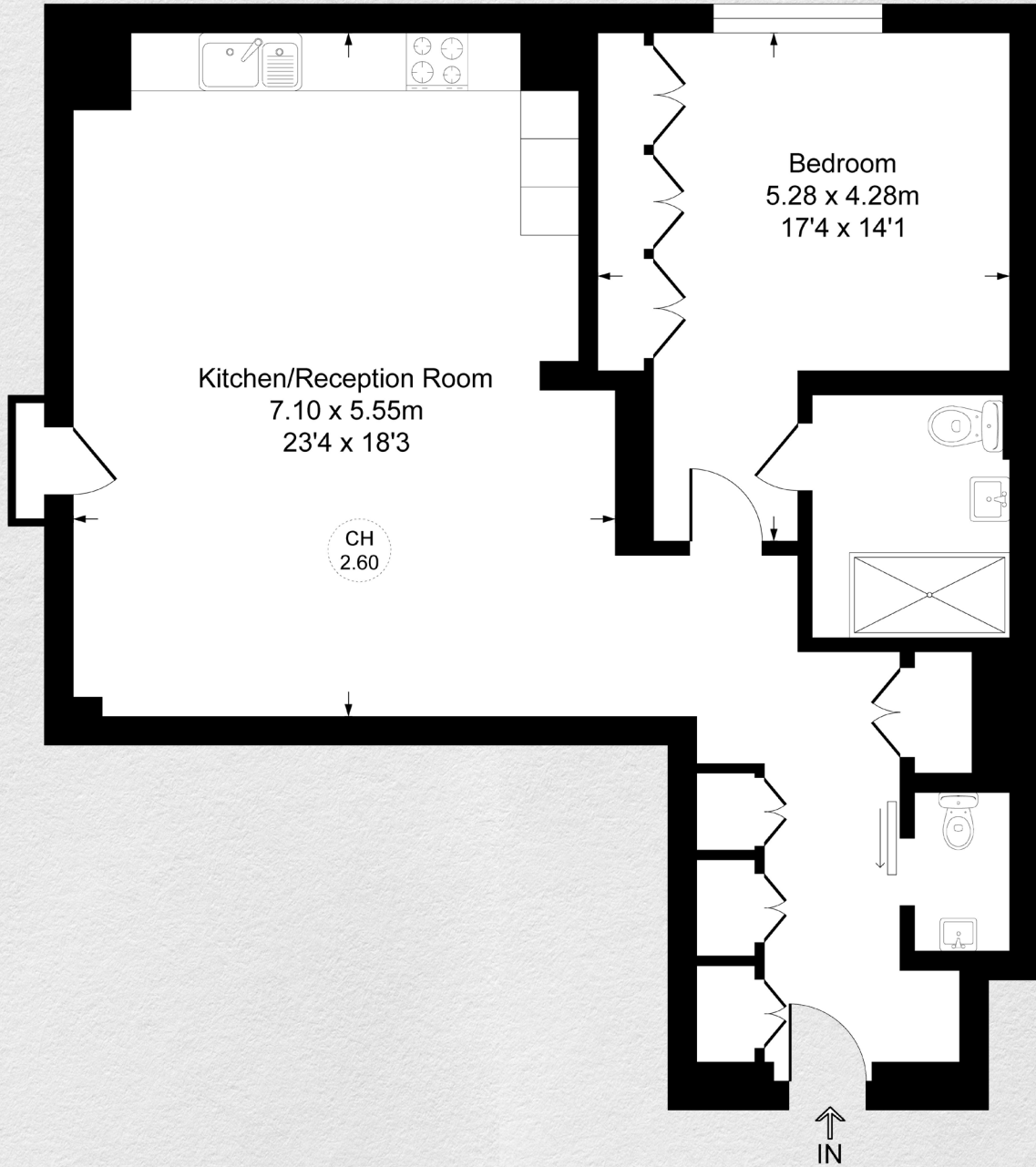
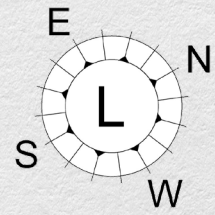
Very spacious one bedroom apartment in the highly sought after Battersea Power Station development.

This 869 sq ft. apartment consists of an open plan kitchen/living room with built in Miele appliances perfect for entertaining. The entrance hall provides excellent storage and a separate W/C and leads into a double bedroom with built in wardrobes and en suite shower room. The apartment offers stylish features such as exposed brickwork with modern finishes to both kitchen and bathroom. The history of Battersea Power Station can be felt in the architecture of this apartment.

Set within the award-winning riverside development of Battersea Power Station, residents benefit from excellent on site amenities including a 24 hour concierge, a residents' lounge and landscaped rooftop gardens with views of the chimneys.

Situated on the River Thames, the apartment is ideally located for Chelsea, Battersea Park and the tube, rail and Thames Clipper transport links nearby.





Address:	sq ft	bed	bath
Switch House West, Battersea Power Station, London SW11 8BD	869	1	2