



£1,650,000 leasehold

Pico House, Battersea, London, SW11

- 2 bedrooms
- 2 bathrooms
- 892 sq ft
- 10th floor
- Private winter garden
- Historic Location
- 24 hour concierge

Large, bright 2 bed, 2 bath apartment on the 10th floor of a beautifully designed building at the Battersea Power Station development in London. With spacious reception and dining rooms, this apartment is ideal for entertaining.

One of the best positioned apartments on the 10th floor benefits include a generous winter garden and fantastic views of the Prospect Garden and Flower Building.

The building offers access to a private garden, reminiscent of a traditional London square. The interiors of Prospect Place have two palettes, LA for adventure and excitement, and London for a focus on history and architecture.

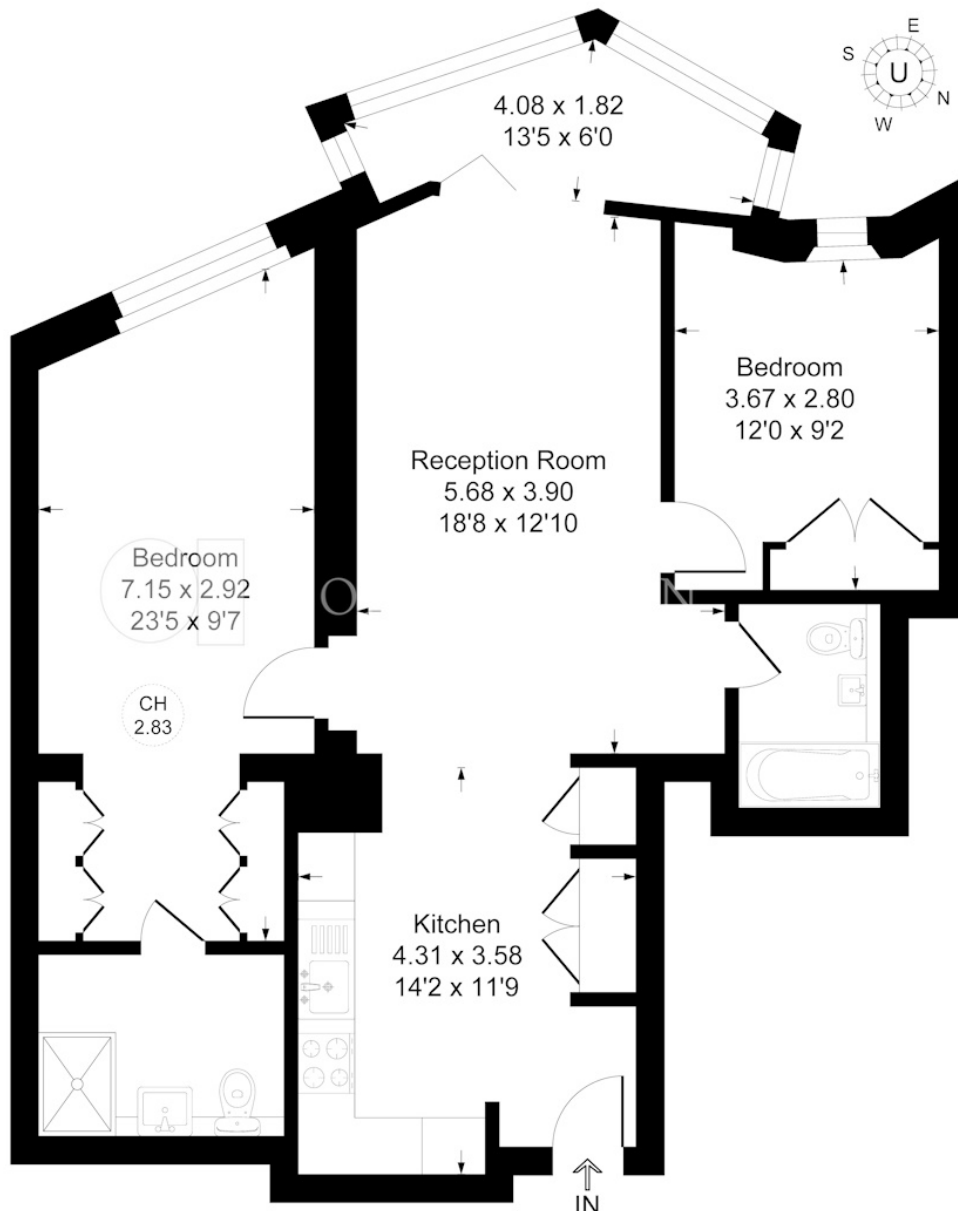
Sit back, relax and enjoy the fantastic views of the Prospect Park and Power Station while enjoying the comfort of your own space. This bespoke apartment is ready to make all your dreams of luxury living come true!..



10th Floor, Pico House, Battersea, London

Pico House, SW1P

Approximate Gross Internal Floor Area = 82.8 sq m / 892 sq ft



10th Floor

This Plan is for Layout guidance Only. Not drawn to scale unless stated. Windows and Door openings are approximate. Whilst every care is taken in the preparation of this plan, please check all dimensions, shapes and compass bearings before making any decisions reliant upon them. Please be advised that Urbanspaces/ our agents have not seen or reviewed any building regulations or planning permission in relation to works carried out to the property