



Merano Residences, Albert Embankment, London, SE1

£5,200 pcm

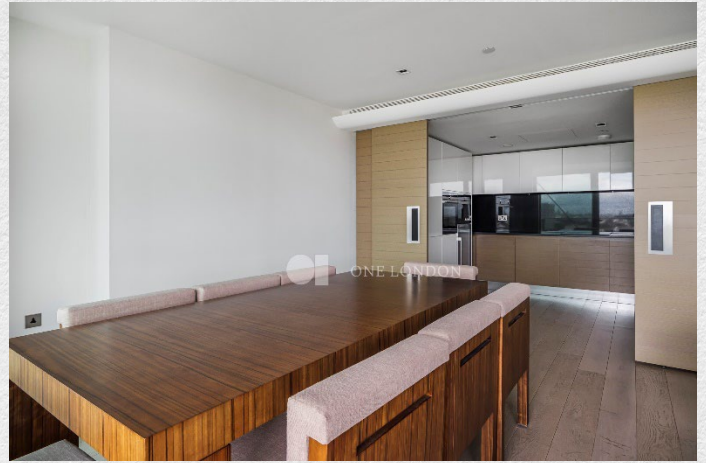
- Available August 2024
- 2 bedrooms (both en-suite)
- 2 bathrooms
- Separate cloakroom/WC
- Large separate living room
- 1,486 sq ft internal
- 265 sq ft balcony & winter garden
- Direct river views
- Underground parking
- Sought after location
- 24 hr concierge

Spacious 2 bedroom 2 bathroom apartment of 1,486 sq.ft with stunning, direct river views. Available August 2024.

A prestigious riverside development created by Rogers Stirk Harbour and Partners.

This spacious property has been finished to the highest standard and offers a large reception room with floor to ceiling windows allowing natural light to flood in from the balcony. A sperate winter garden facing the opposite direction allowing you to choose from 2 separate external spaces to relax in and enjoy the river views.

Merano Residences will also provide residents with a dedicated 24-hour concierge service, a shared external roof terrace on level 14 and bike storage in the basement. Underground parking is also available





Address:

Merano Residences, Albert Embankment, London, SE1

sq ft bed bath

internal 1,486 2 2

balcony + roof garden 265

*** For illustration purposes only. Could not be to scale. One-London aims to ensure accuracy but is not liable for any discrepancies.*