




Ash Hill Road, Ash, GU12 5DN

Offers Over £315,000

 2  1  1

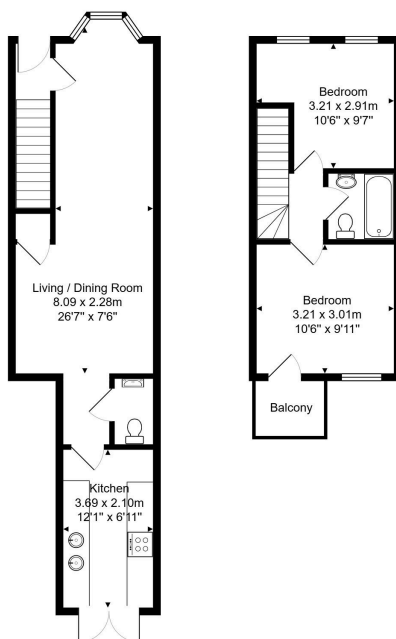


Centrally positioned within the village of Ash stands this beautiful Victorian cottage.

Key Features

- Victorian Cottage
- Fitted Kitchen
- Family Bathroom
- Balcony To The Master Bedroom
- Presented In Great Order
- 26ft 7 Living Dining Room
- Two Bedrooms
- Downstairs Cloakroom
- Courtyard Garden
- Close To Ash Train Station and Ash Wharf

85, Ash Hill Road, Ash, GU12 5DN



Total Area: 61.7 m² ... 664 ft² (excluding balcony)

All measurements are approximate and for display purposes only