




Emerald Avenue, Fleet , GU51 5DG

£635,000

 4  2  2

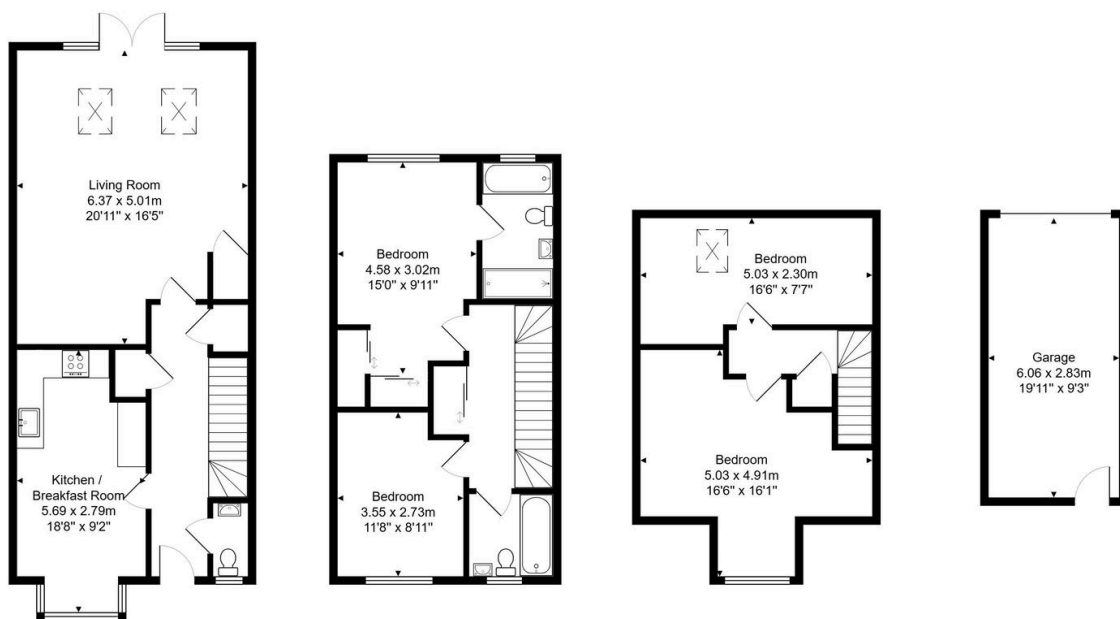


Located in the popular Edenbrook development is this well-presented spacious family home. Accommodation offers open plan reception areas, kitchen/breakfast room, four bedrooms, two bathrooms, W.C plus a garage with driveway parking for two cars.

Key Features

- Edenbrook Development
- Four Bedrooms
- Large Living Dining Room
- Downstairs Cloakroom
- Enclosed Rear Garden
- Spacious Family Home
- Two Bathrooms
- Kitchen Breakfast Room
- Garage & Driveway Parking For Two Cars
- Close To Nature Reserve

55, Emerald Avenue, Fleet, GU51 5DG



Total Area: 152.4 m² ... 1640 ft²

All measurements are approximate and for display purposes only