

Albany Road, Fleet, GU51 3LY

Guide Price £695,000

 4  1  2

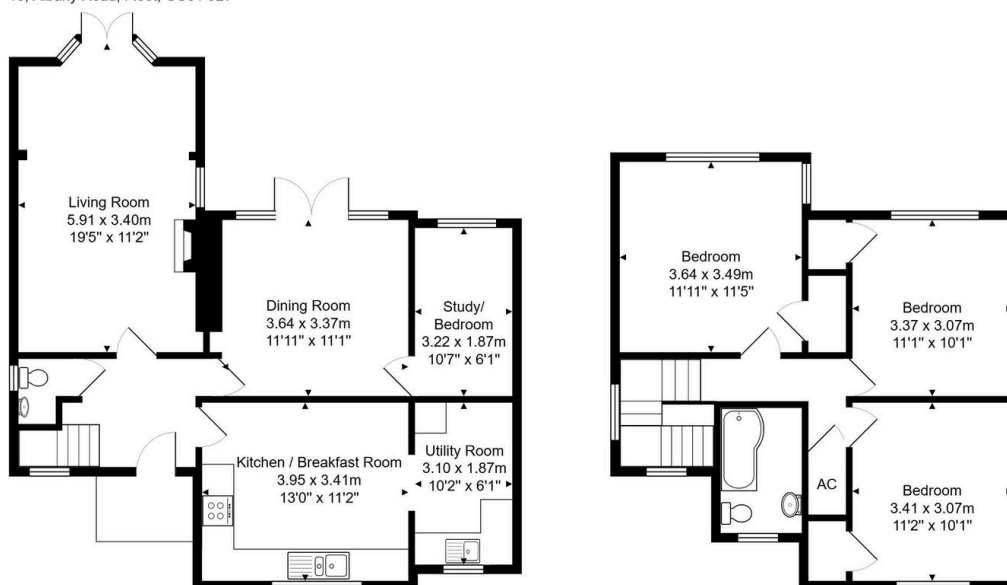


Dating back to 1938 and retaining many original features stands this beautifully presented extended period home moments away from Fleet's town centre.

Key Features

- Fleet Town Centre
- Extended in 1987 & 2011
- Four Bedrooms Over Two Floors
- Kitchen Breakfast Room & Utility
- Landscaped Gardens
- Detached Family Home Built In 1938
- Presented In Excellent Order
- Two Large Reception Rooms
- Off Road Parking
- Close Proximity To Oakley Park & Basingstoke Canal

16, Albany Road, Fleet, GU51 3LY



Total Area: 117.6 m² ... 1266 ft²

All measurements are approximate and for display purposes only