


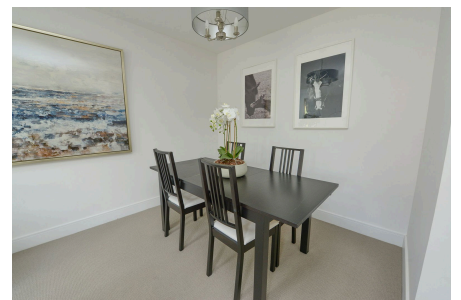


Emerald Avenue, Fleet, GU51 5DG

Guide Price £675,000

 3  2  2

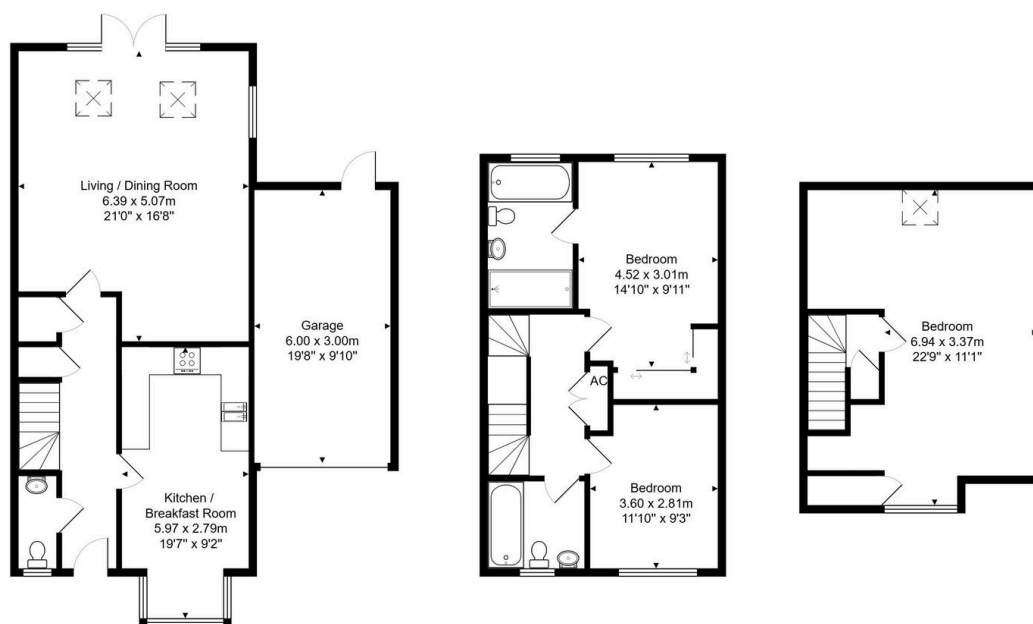


Located in the popular Edenbrook development is this well-presented spacious family home. Accommodation offers open plan reception areas, kitchen/breakfast room, three bedrooms, two bathrooms, W.C plus a garage with driveway parking.

Key Features

- Edenbrook Development
- Three Large Bedrooms
- Living Dining Room With Vaulted Ceiling
- Cloakroom
- Garage & Off Road Parking
- Semi Detached Home
- Two Bathrooms
- Kitchen Breakfast Room
- Large Rear Garden
- Excellent Order Throughout

9, Emerald Avenue, Fleet, GU51 5DG



Total Area: 157.8 m² ... 1699 ft²

All measurements are approximate and for display purposes only