




## Doyle Gardens, Yateley, GU46 6XY

Guide Price £639,950

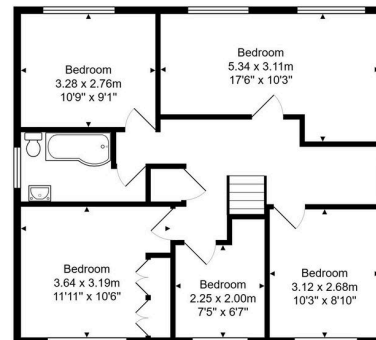
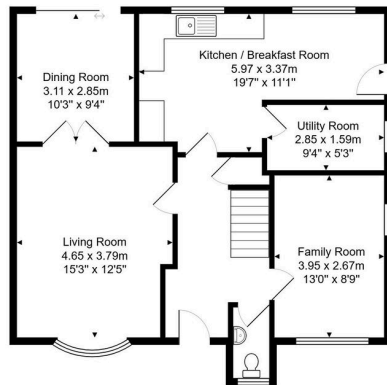
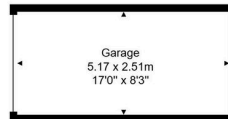
 5  1  3



- Popular Poet's Development
  - Three Receptions Rooms
  - Cloakroom
  - Single Garage With Off Road Parking
  -
- Five Bedrooms
  - Kitchen Breakfast Room & Utility
  - Large Rear Garden
  - Cul De Sac Location
  -



17, Doyle Gardens, Yateley, GU46 6XY



Total Area: 153.9 m<sup>2</sup> ... 1656 ft<sup>2</sup>

All measurements are approximate and for display purposes only

Tucked away at the end of a popular cul de sac is this extended five bedroom detached family home on a generous plot.