




Turners Avenue, Fleet, GU51 1DU

£525,000

 4  2  2

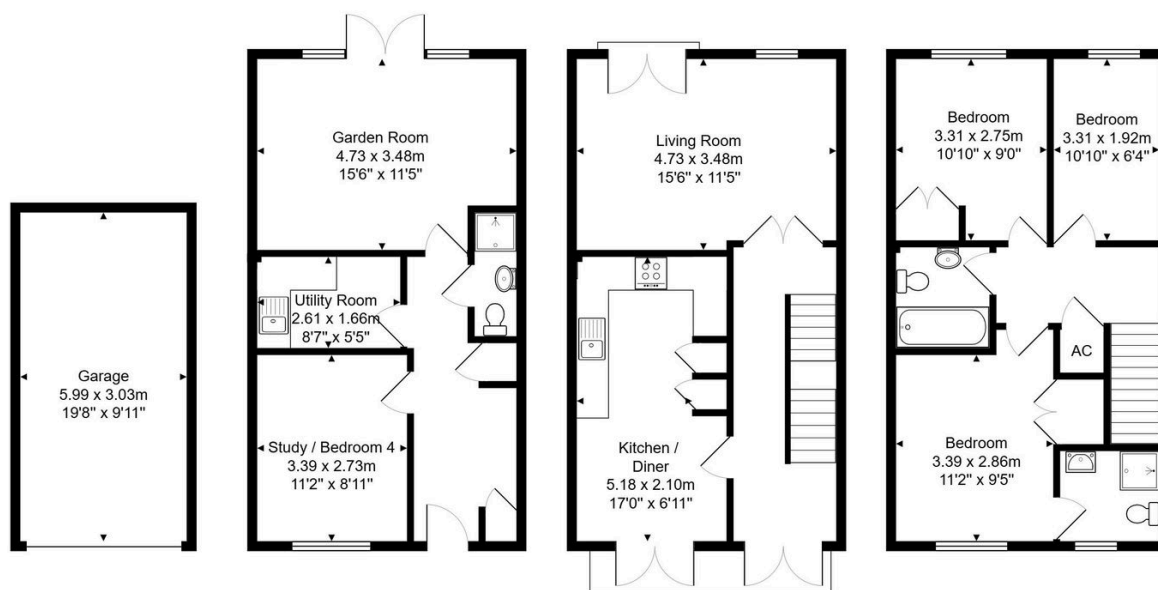


Located on the desirable Elvetham Heath development stands this well presented three/four bedroom property with accommodation laid out over three floors.

Key Features

- Elvetham Heath Development
- Close To Local Schools
- Garage & Parking
- Close To Nature Reserve
- Three/ Four Bedrooms
- Bedrooms Open Plan Kitchen and Dining Room
- En Suite Bathroom to Bedroom One
- Large Living Room
- Landscaped Garden
-

15, Turners Avenue, Fleet, GU51 1DU



Total Area: 143.5 m² ... 1544 ft²

All measurements are approximate and for display purposes only