

## Grasmere Road, Farnborough, GU14 0LE

Guide Price £650,000

 5  2  4

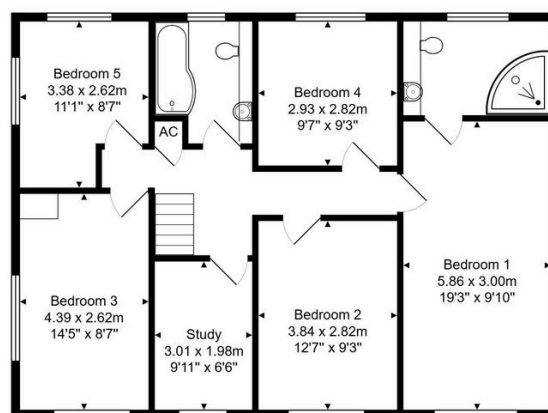
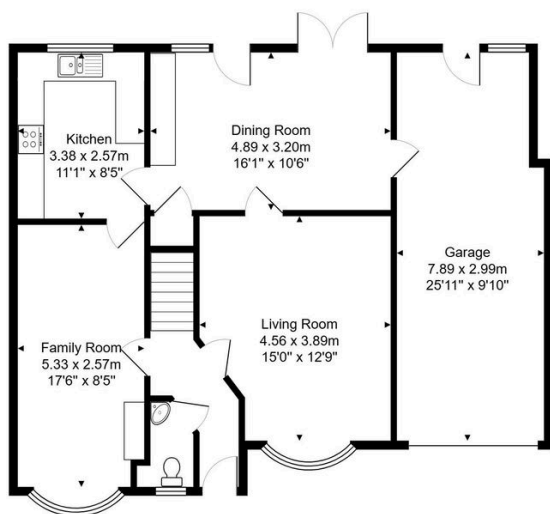


A substantial detached family home ideally placed within Southwood siding onto playing fields and a country park just a moment's walk.

## Key Features

- Substantial Family Home
- Three Reception Rooms Plus Study
- Large In/out Driveway
- Close to the playing fields
- Short Distance to Farnborough's Town & Train Station
- Five Bedrooms
- Corner Plot
- Established Location Of Southwood
- Short Walk From Local Schools
- 'A' Rated EPC, Including Solar Panels & Battery

2, Grasmere Road, Farnborough, GU14 0LE



Total Area: 174.3 m<sup>2</sup> ... 1876 ft<sup>2</sup>

All measurements are approximate and for display purposes only