

## Kings Place, FLEET, GU51 3FS

£400,000

🛏 2 🚿 2 🛋 1

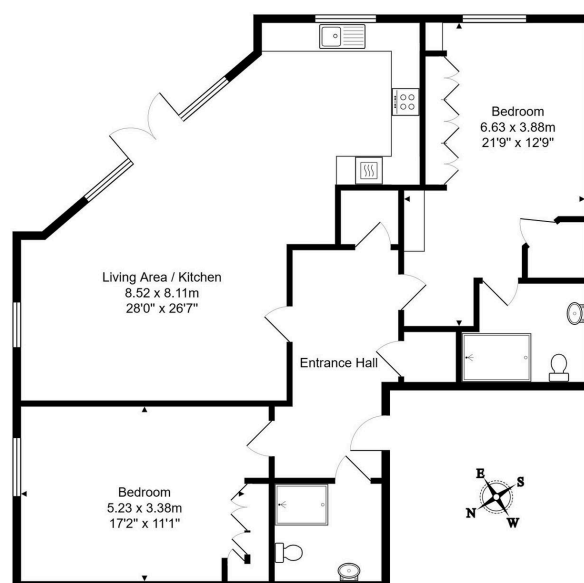


This stunning two bedroom ground floor apartment is situated within Kings Place which is a purpose built luxury retirement development constructed in 2015 by the renowned builder McCarthy and Stone. The property, which is arguably one of the largest in the development, is located in the heart of Fleet town centre and is within easy access of Fleet mainline railway station.

## Key Features

- Luxury Retirement Apartment
- Leasehold Term 125 years from 01/06/2015
- Two Double Bedrooms, Two Shower Rooms
- Table Service Restaurant
- Parking Spaces Available
- Ground Floor Apartment With Patio
- Viewings Strictly By Appointment Only
- Open Plan Kitchen Through Living Room
- Over 70's Development Lounge With Library Mezzanine Guest Suite & Laundry Room
- 

3, Kings Place, Fleet, GU51 3FS



Total Area: 111.9 m<sup>2</sup> ... 1204 ft<sup>2</sup>

All measurements are approximate and for display purposes only