


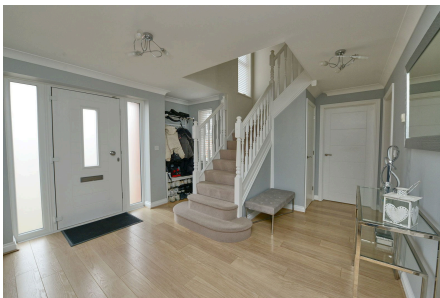


Harrow Road, Fleet, GU51 1JD

Guide Price £950,000

 5  3  4



An immaculate five bedroom detached family home, presented in excellent order throughout and located on a desirable road within the popular Elvetham Heath development. With good sized family accommodation set over two floors the property offers wonderful entertaining space with 4 reception rooms.

Key Features

- Elvetham Heath Development
- Three Bathrooms
- Family Room & Study
- Double Garage & Off Road Parking
- Five Bedrooms
- 23ft 6 Living Room
- Large Kitchen Dining Room
- Landscaped Gardens

9, Harrow Road, Fleet, GU51 1JD



Total Area: 238.0 m² ... 2562 ft²
All measurements are approximate and for display purposes only