





Willowbourne, Fleet, GU51 5AB

£765,000

🛏 4 🚿 2 🚗 2





Built to an exceptionally high standard by Messrs Berkeley Homes to their Morris design is this immaculately presented four bedroom family home situated on the popular Edenbrook development in Fleet.

Offering spacious and well-balanced family accommodation over two floors with a large contemporary kitchen, dining and family areas with French doors leading to the rear garden. There is a large living room with bay window overlooking the front and separate WC. To the first floor are the four good sized bedrooms and a family bathroom. The master bedroom benefits from a balcony and en-suite bathroom.

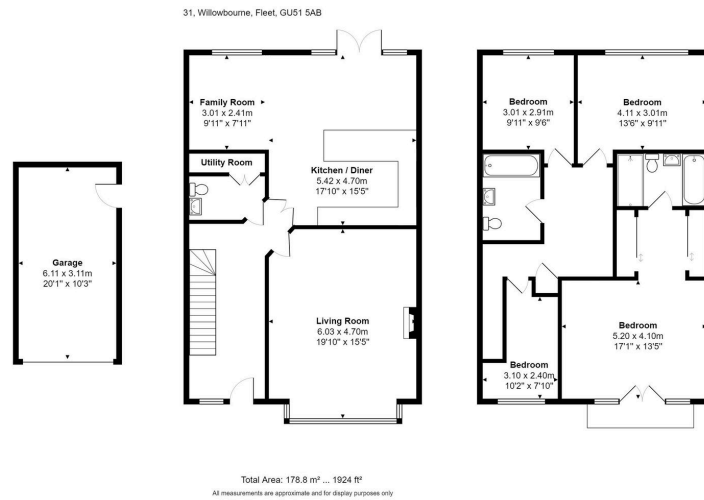
The garden has been beautifully landscaped with patio area immediately to the rear of the property and access to a detached single garage.

Agents notes: The property has a recently refitted boiler, the development has a service charge.

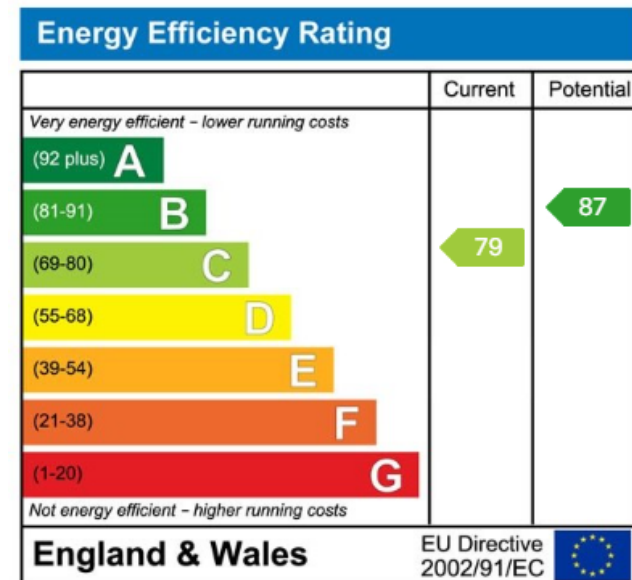
Nearby is Hart Leisure Centre, which provides state of the art gym equipment, swimming pools and 3G pitches for a variety of sports. Fleet Station is under 2 miles away, providing direct connections to London Waterloo. Fleet town centre is also nearby (within a mile), offering a wide range of shopping facilities, cafes, bars and restaurants.

Viewings are highly recommended to appreciate what this property has to offer.





- No Onward Chain
- Four Bedroom Detached
- Large Living Room With Bay Window
- Detached Single Garage & Parking
- Presented In Excellent Order Throughout
- Two Bathrooms
- Stunning Kitchen/Dining/Family Room
- Landscape Rear Garden



01252 227121 sales@labramholmes.co.uk

www.labramholmes.co.uk