

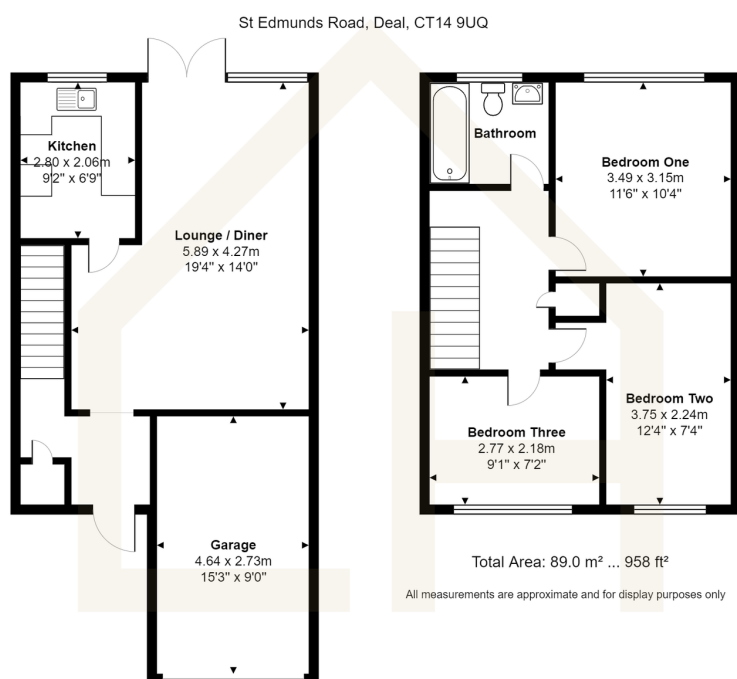
St. Edmunds Road, Deal

Guide Price £250,000 - £275,000

 3  1  1



- GUIDE PRICE £250,000 - £275,000
- NO CHAIN - READY TO MOVE IN
- NO THROUGH ROAD LOCATION
- GENEROUSLY SIZED THIRD BEDROOM
- INTEGRATED GARAGE AND DRIVEWAY
- OPEN PLAN LOUNGE DINER
- MODERN FULLY FITTED KITCHEN
- CLOSE TO LOCAL AMENITIES
- POTENTIAL FOR OFFICE / STUDY / WFH CONVERSION
- COMPARABLY PRIVATE REAR GARDEN WITH SIDE ACCESS



GUIDE PRICE £250,000 - £275,000. NO CHAIN! If you are seeking a Semi-Detached home with a Garage and Parking, in a quiet road with a generously sized third Bedroom, call us today to book your viewing.