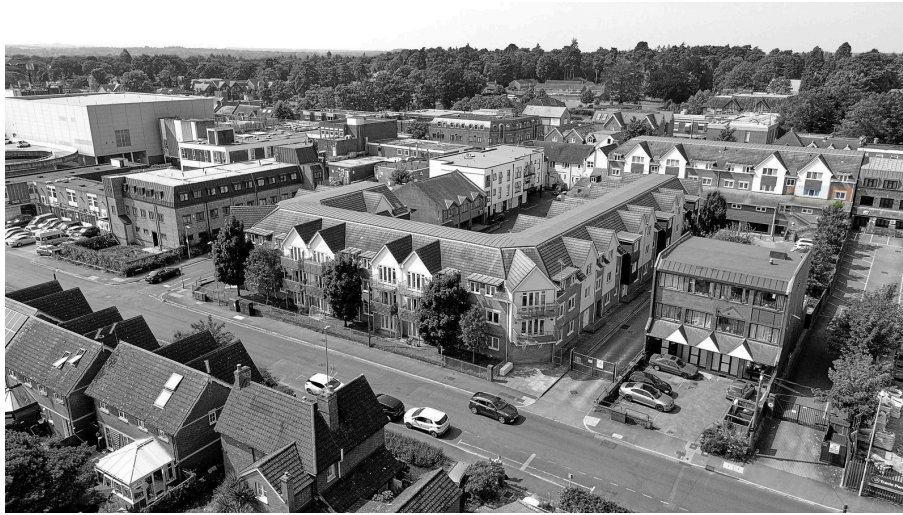




Old Dairy Close, Fleet, GU51 3SJ

Offers Over £172,500

🛏️ 1 🚿 1 🚗 1

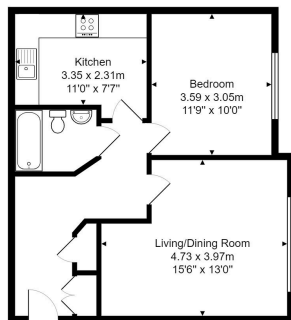


*****ACCOMMODATION APPROX. 558 SQ. FT, LEASE LENGTH APPROX.134 YEARS***** We are delighted to offer this spacious first floor apartment, situated within a gated development in the heart of Fleet town centre. The property offers a lounge/dining room, kitchen, a double bedroom and a bathroom. There is a communal bike store within the gated development. The mainline train station and local amenities are within walking distance and access to junction 4a of the M3 motorway is within easy reach.

Fleet is situated in the northeast corner of Hampshire, close to the Surrey and Berkshire borders. The town offers excellent transport links to London and the south coast via its mainline rail service from Waterloo and junction 4a of the M3 motorway. The Basingstoke Canal runs through the town, with the section between the Wey Navigation and the Greywell Tunnel maintained as a leisure facility. Fleet town centre offers an excellent range of multiple and independent retailers. Fleet has several business parks and in recent years has expanded with new residential areas being built at Edenbrook and Elvetham Heath. The town offers an excellent choice of respected schools from both the state and independent sectors.



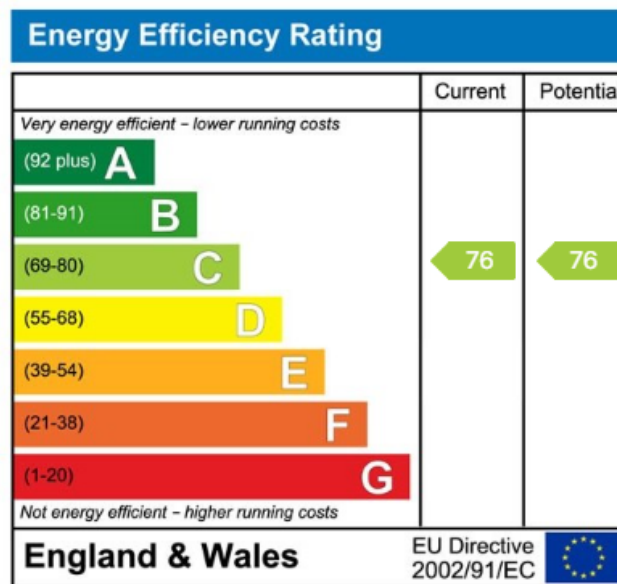
57, Old Dairy Close, Fleet, GU51 3SJ



Total Area: 51.8 m² ... 558 ft²
 All measurements are approximate and for display purposes only



- Fleet Town Centre Location
- First Floor Flat
- 134 Year Lease
- Presented In Excellent Order
- Double Bedroom
- Family Bathroom
- Living Dining Room
- Fitted Kitchen
- Ideal First Time Buyer Or Investment Property



01252 227121 sales@labramholmes.co.uk

www.labramholmes.co.uk