


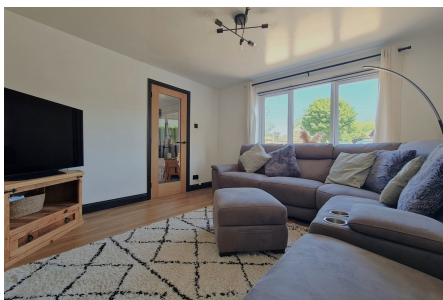


The Crescent, Chapel Hill, Eythorne

£350,000

 3  2  2



A wonderfully updated family home that goes beyond just the aesthetic appeal, this well balanced family home is waiting for new owners.

Key Features

- BEAUTIFULLY PRESENTED THREE BEDROOM SEMI DETACHED HOME
- FAR REACHING COUNTRYSIDE VIEWS TO REAR
- COMPARABLY PRIVATE, EXPANSIVE REAR GARDEN WITH SIDE ACCESS
- RAISED DECKED AREA, IDEAL FOR ENTERTAINING
- A HOST OF MODERN UPDATES INSTALLED BY CURRENT OWNER - SEE FULL DESCRIPTION
- IDYLIC VILLAGE LOCATION OF EYTHORNE
- PARKING FOR MULTIPLE VEHICLES
- STUNNING KITCHEN DINER, OVERLOOKING REAR GARDEN
- SUN ROOM, WC AND UTILITY
- POTENTIAL FOR A NO ONWARD CHAIN PURCHASE

