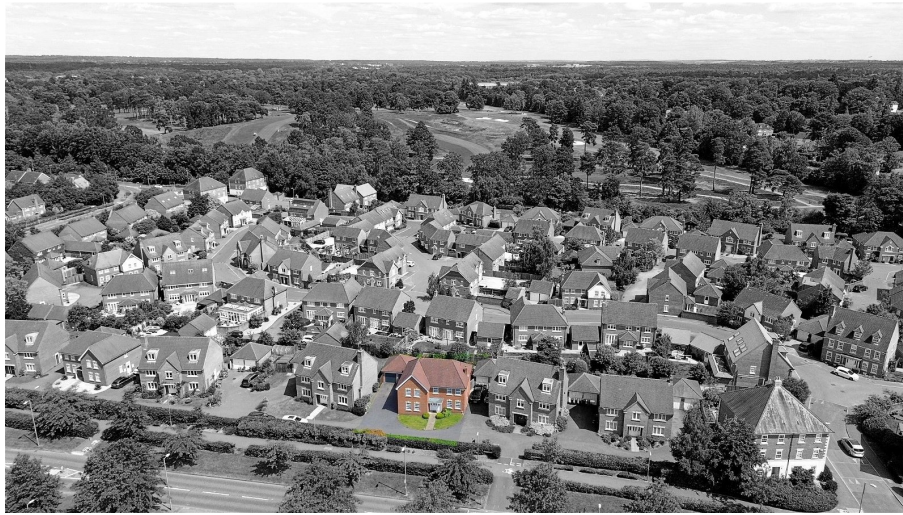




Spreadbury Drive, Fleet, GU51 1JA

Guide Price £965,000

5 3 4



An immaculate five bedroom detached David Wilson family home built to their HAZELEY design, presented in excellent order throughout and located on a desirable road within the popular Elvetham Heath development.

With good sized family accommodation set over two floors the property offers wonderful entertaining space with 4 reception rooms.

Through the front door a spacious entrance hall leads to the kitchen/ breakfast/family room, study, living room, dining room, WC and stairs to the first floor. The refitted kitchen faces the rear and features a range of eye and base level units with built in appliances and a large island in the breakfast area, all topped off with sleek quartz work surfaces. The kitchen/breakfast room is open to the family room which enjoys a triple aspect and has double doors to the rear garden. A further door also leads to the utility room which has worksurfaces and a door to the driveway. The living room, a sizable room of note enjoys a double aspect, features a gas fireplace and has double doors out to the rear garden. There is a dining room which overlooks the front which can easily accommodate a large dining table and chairs and a good sized study.

On the first floor, there is a lovely galleried landing, five generous sized bedrooms, two with en-suite facilities as well as a family bathroom.

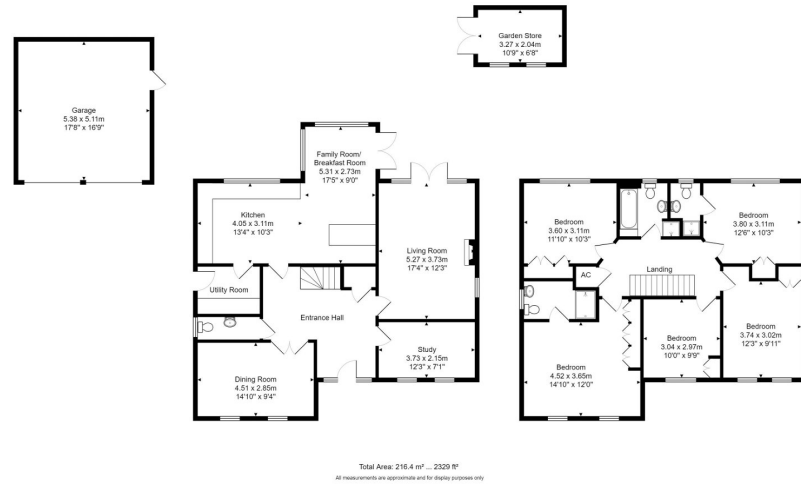
Externally there is an attractive rear garden with patio area, a well-manicured lawn, plant, shrub and tree borders, a further seating area and a garden store. Access can also be gained to the double garage which has power, lighting as well as two roller garage doors. The property also benefits from a large driveway with parking for several vehicles.

Agents Notes: Other benefits include a new heating system fitted 7 years ago, a water softener and a hot water tap in the kitchen.

The property is within close proximity to Elvetham Heath school and local amenities.

Elvetham Heath is a development with a wealth of amenities





- Elvetham Heath Development • 5 Bedroom Detached House
- Three Bathrooms
- Four Reception Rooms
- Refitted Kitchen Breakfast Room & Utility Room
- Landscaped Gardens
- Double Garage & Driveway Parking
- Excellent Order Throughout
- Highly Desirable Location

