




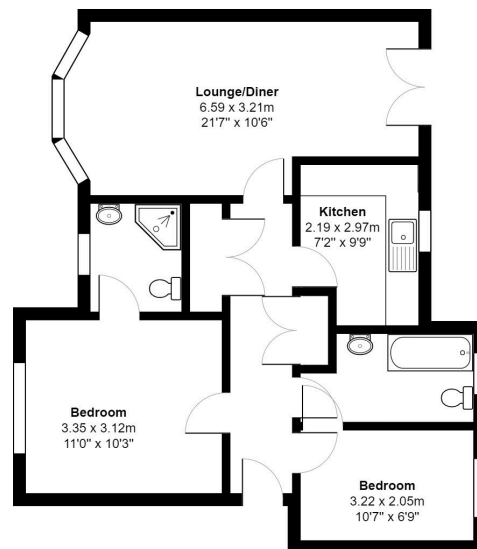
Norn Hill, Basingstoke, RG21 4HP

Offers Over £200,000

 2  2  1



- No Onward Chain
- 21'7 Lounge/Dining Room
- Two Double Bedrooms
- Ensuite to Master bedroom
- First Floor
- Kitchen
- Family Bathroom
- Allocated Parking Space



Total Area: 64.0 m² ... 689 ft²

All measurements are approximate and for display purposes only

Offered for sale with no onward chain is this nicely presented two bedroom first floor apartment, located just a short walk from the train station and Basingstoke town centre. The property comprises two double bedrooms, bathroom and en-suite, kitchen with appliances, 21'7 living area and one allocated parking space. **VIEWINGS HIGHLY RECOMMENDED**