



49 WINTON ROAD, NORTHALLERTON

OFFERS IN THE REGION OF £325,000



Northallerton  
Estate Agency





# Winton Road

Northallerton, DL6 1RG

**THIS BRICK BUILT, TIMBER FRAMED 3-BEDROOM DETACHED BUNGALOW COMPRISES OF UVPC THROUGHOUT THE PROPERTY, GAS FIRED CENTRAL HEATING, BEAUTIFUL HIGHLY SOUGHT-AFTER RESIDENTIAL AREA. WELL LAID OUT GENEROUSLY PROPORTIONED WITH SCOPE TO ADD AN ENSUITE TO MASTER BEDROOM.**

- 3 BEDROOM
- GARAGE
- GAS FIRED CENTRAL HEATING
- DETACHED BUNGALOW
- SOUGHT AFTER RESIDENTIAL AREA
- UTILITY

#### **ENTRANCE HALL**

TILED STEPS INTO COVERED ENTRANCE WITH PANELLED WALLS, UVPC PART GLAZED DOOR, GOOD SIZED ENTRANCE HALL WITH BT POINT, CEILING LIGHT POINT, CLOCK CUPBOARD WITH HOOKS AND SHELVES, DOUBLE RADIATOR, PINT DOOR INTO SITTING ROOM.

#### **LIVING ROOM**

ENJOYS FIRE PLACE WITH CUT MARBLE HEARTH AND BACKPLATE WITH INSET FLAME EFFECT GAS FIRE, COVED CEILING, CEILING LIGHT POINT, LOW LEVEL DOUBLE RADIATOR, LARGE WINDOW GIVING A HIGH DEGREE OF NATURAL LIGHT, WALL MOUNTED LIGHT POINT, TV POINT, ARCHWAY LEADING THROUGH TO DINING ROOM.

#### **DINING ROOM**

COVED CEILING, CEILING LIGHT POINT, RADIATOR, SIDING PINE MULTI PANELLED GLAZED DOOR.

#### **KITCHEN**

LIGHT BEECH RANGE OF WALL AND BASE UNITS, MARBLE EFFECT WORKSURFACE, INSET 4 RING GAS HOB, BUILT IN DOUBLE OVEN AND GRILL WITH MICROWAVE OVER, UNIT INSET SINGLE DRAIN AND BOWL STAINLESS STEEL SINK UNIT, TILED SPLASHBACK, BUILT IN AIRING CUPBOARD HOUSING EMERSON HEATER WITH SHELVED STORAGE, DOOR TO HALLWAY AND DOOR INTO ENTRANCE HALL.

#### **UTILITY**

REAR DOOR IS UPPER ETCHED GLASS WITH PANELS LEADING INTO THE UTILITY, WITH A RANGE OF BASE UNITS, SPACE AND PLUMBING FOR WASHING MACHINE AND DISHWASHER, CEILING LIGHT POINT, RADIATOR, WALL MOUNTED WASH BASIN, GLAZED TO 3 SIDES GIVING NATURAL LIGHT AND NICE VIEWS TO THE GARDEN.

#### **BATHROOM**

WHITE SUITE COMPRISING OF PANELLED BATH, FULLY TILED ROOM, QUALITY MIXER TAP, SHOWER ATTACHMENT WITH ELECTRIC SHOWER, SHOWER SCREEN, MATCHING WASH BASIN AND TOILET, WALL MOUNTED HEATED TOWEL RAIL, WALL MOUNTED SHAVER SOCKET AND MIRROR, WALL MOUNTED EXTRACTOR.

#### **BEDROOM1**

ENJOYS COVED CEILING, 3 WALL LIGHT POINTS, BUILT IN BEDROOM FURNITURE, RANGE OF DOUBLE WARDROBES WITH HANGING AND SHELVES WITH FULL LENGTH MIRRORS, MATCHING DRESSING TABLE UNIT WITH 4 DRAWERS, RADIATOR, GREAT VIEWS TO REAR, 3 WALL MOUNTED LIGHT POINTS.

#### **BEDROOM2**

RADIATOR, CEILING LIGHT POINT, BEAUTIFUL VIEWS TO FRONT.

#### **BEDROOM3**

RADIATOR, CEILING LIGHT POINT, TELEPHONE POINT.

#### **GARAGE**

GARAGE ENJOYS LIGHT AND POWER, UP AND OVER GARAGE DOOR TO THE FRONT WITH A DOOR TO THE SIDE FOR EXTRA ACCESS. HOUSES THE GAS FIRED HEATING GREENSTAR CONDENSING BOILER.

VIEWING - BY APPOINTMENT THROUGH THE AGENCY - Tel. No. 01609 771959

TENURE - FREEHOLD  
SERVICES - MAINS GAS, WATER, ELECTRIC & DRAINAGE  
NYCC TAX BAND - D  
EPC - TBC



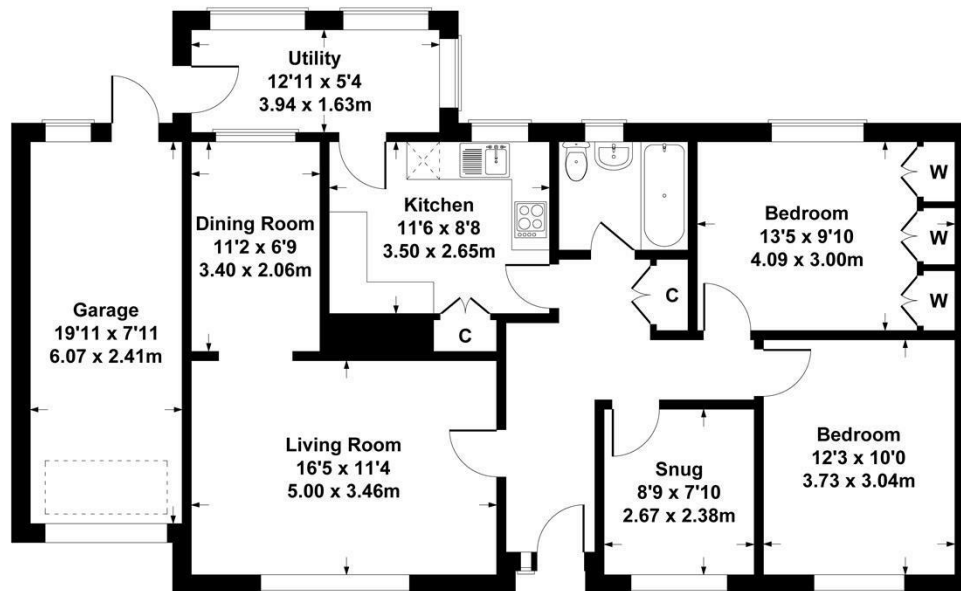


Call us to arrange a viewing on **01609 771959**



## 49 Winton Road, Northallerton, DL6 1QH

Approximate gross internal area  
House - 105 sq m - 1130 sq ft



### SKETCH PLAN FOR ILLUSTRATIVE PURPOSES ONLY

All measurements walls, doors, windows, fittings and appliances, their sizes and locations, are approximate only. They cannot be regarded as being a representation by the seller, nor their agent.

Produced By Vue3Sixty



Energy Efficiency Rating		Current	Potential
	A		
	B		
	C		
	D		
	E		
	F		
	G		
After energy efficient lighting savings only England & Wales EU Directive 2002/91/EC			

Northallerton Estate Agency does not seek to avoid our criminal and civil liabilities by the use of cleverly worded small print. Our staff have undergone training and follow set procedures, but it is not possible for us to guarantee that everything written in our sales particulars is accurate. Please note that unless stated otherwise:

- These particulars have been prepared in all good faith to give a fair and overall view of the property. If any points are particularly relevant to your interest in the property, then please ask for further information/verification
  - These particulars are set out as a general outline only for the guidance for intending purchasers and do not constitute, nor constitute a part of, an offer or Contract.
  - All descriptions, dimensions, measurements, distances referred to, are given as a guide only and are NOT precise. If such details are fundamental to purchase, purchasers must rely on their own enquiries. All statements do not constitute any warranty or representation by the Vendor or his/her Agents.
  - We have NOT been instructed to carry out a physical survey of the property, a structural survey nor to test any of the services, fixtures, fittings or appliances which pass through, in, on, over, under or attached to the property (whether or not referred to in these particulars). Any equipment appliance or service mentioned, has not been tested by us, nor is it the subject of any guarantee.
  - Any plans may not be to scale and are for identification purposes only.
  - Items included in the written text are included in the sale. All others are excluded regardless of their inclusion of any photograph.
  - You should place no reliance on anything stated verbally by any of our staff unless the matter is confirmed by us in writing. If any issue (included or not in these particulars) is of major importance to your interest in this property, please ask us for further information.
- In the event of any grievance, via our in-house complaints procedure we will consider why we may not have given you the high standards you have a right to expect from us.

143 High Street, Northallerton, North Yorkshire, DL7 8PE

T: 01609 771959

E: sales@northallertonestateagency.co.uk

[www.northallertonestateagency.co.uk](http://www.northallertonestateagency.co.uk)



**Northallerton**  
Estate Agency