

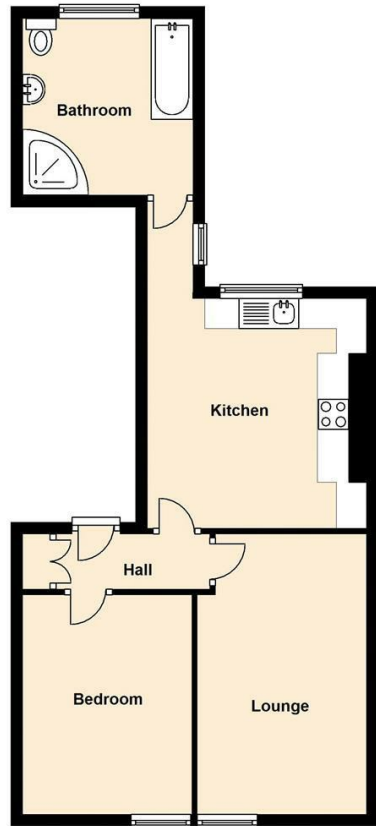


7 Herbert Road
North Somerset, BS21 7ND

£825 PCM

MAYFAIR
TOWN & COUNTRY

Ground Floor



PROPERTY DESCRIPTION

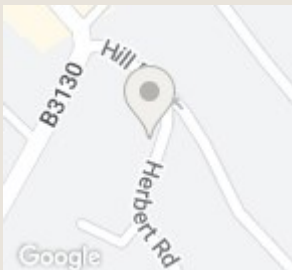
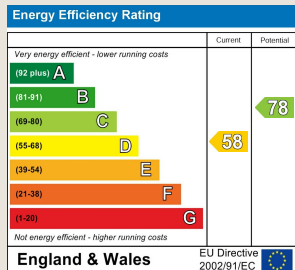
First floor one bed apartment in Herbert Road available from the end of May.

Phone applications not accepted, please apply through the website.

Located in the prime Clevedon Hillside area a short walk away from Hill Road High Street and Seafront. The property boasts large open-plan kitchen/diner with light decorations and white units, offering one/hob/extractor fan and white goods such as mini fridge/freezer and washing machine. Off this room is a lower level bathroom with large floor space, white suite and shower unit. Moving back up through the property is a narrow living room with feature fireplace and double bedroom.

The property also benefits from gas central heating, parking space and Tax Band A.

- Single occupancy only
- Victorian apartment
- First floor position
- Spacious one bedroom
- Large kitchen with appliances
- Private parking space
- EPC: D
- Tax Band: A
- Deposit: £951
- Holding Deposit: £190



TO ARRANGE A VIEWING OR FOR FURTHER INFORMATION ON THIS PROPERTY PLEASE CONTACT OUR SALES TEAM

01275 341400

clevedon@mayfairproperties.net

Local Authority

North Somerset Council Council Tax Band: A

Tenure:

EPC Rating: D



We would like to inform prospective purchasers that these sales particulars have been prepared as a general guide only. If there are any important matters likely to affect your decision to buy, please contact us before viewing the property.

1. Survey - A detailed survey has not been carried out, nor the services, appliances and fittings tested.
2. Floorplans All measurements walls, doors, windows, fittings and appliances, their sizes and locations are shown conventionally and are approximate and cannot be regarded as being representative either by the seller or his agent. Room sizes should not be relied upon for furnishing purposes and are approximate.
3. Mayfair Town & Country may make the following referrals and in exchange receive an introduction fee: Simply Conveyancing up to £200 (plus VAT), HD Financial Ltd - introduction fee of up to £240 (plus VAT)

