



Longdon House Pine Close

Corscombe, DT2 0PF

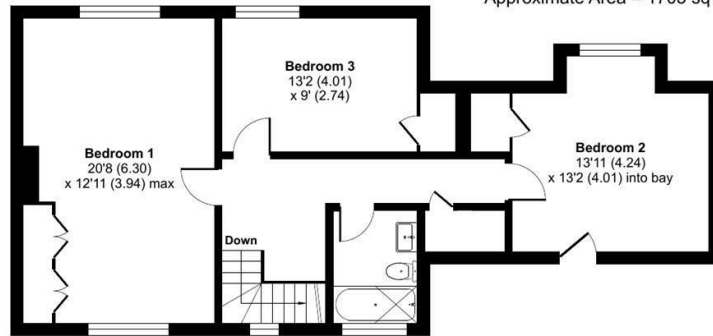
£1,450 PCM

MAYFAIR
TOWN & COUNTRY

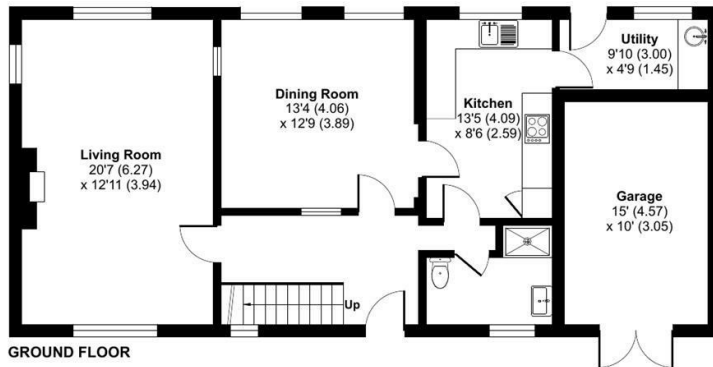
Pine Close, Corscombe, Dorchester, DT2

Approximate Area = 1703 sq ft / 158.2 sq m (includes garage)

For identification only - Not to scale



FIRST FLOOR



GROUND FLOOR

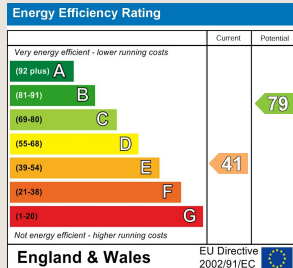


Floor plan produced in accordance with RICS Property Measurement Standards incorporating International Property Measurement Standards (IPMS2 Residential). © nichecom 2023. Produced for Mayfair Town & Country. REF: 995579

PROPERTY DESCRIPTION

Longdon House is a unique hamstone, character property in the desirable village of Corscombe, with far-reaching views overlooking wildflower meadows. With locally hand-carved stone fireplace, mullion windows and arches. On the ground floor a large sitting room spans the depth of the property with a separate dining room, kitchen, and utility room housing the oil fired boiler. Upstairs is reached from a very welcoming entrance hall with timber staircase and offers three large double bedrooms and a family bathroom. Outside there are front and rear gardens along with parking on a private driveway in front of the garage. Mains electricity, water and drainage. Oil Central Heating. For mobile and internet coverage, please check with Ofcom.

- Large Family Home
- Two Reception Rooms
- Desirable Village Location with Beautiful Gardens
- EPC E Council Tax Band E
- Three Double Bedrooms
- Utility Room
- Garage and Parking



TO ARRANGE A VIEWING OR FOR FURTHER INFORMATION ON THIS PROPERTY PLEASE CONTACT OUR SALES TEAM

01305 269200

dorchester@mayfairproperties.net

Local Authority

Dorset Council Council Tax Band: E

Tenure:

EPC Rating: E



We would like to inform prospective purchasers that these sales particulars have been prepared as a general guide only. If there are any important matters likely to affect your decision to buy, please contact us before viewing the property.

1. Survey - A detailed survey has not been carried out, nor the services, appliances and fittings tested.
2. Floorplans All measurements walls, doors, windows, fittings and appliances, their sizes and locations are shown conventionally and are approximate and cannot be regarded as being representative either by the seller or his agent. Room sizes should not be relied upon for furnishing purposes and are approximate.
3. Mayfair Town & Country may make the following referrals and in exchange receive an introduction fee: Star Legal up to £120 inc VAT, Simply Conveyancing up to £240 inc VAT, HD Financial Ltd - introduction fee of up to £240 inc VAT

