



5

Bedrooms



3

Bathrooms



GENEROUS SIZES THROUGHOUT! This fantastic family home comes to the market having been extended to rear and loft space offering a large living space across three floors. This Semi-detached property is perfect for the bigger or growing family with its four/five bedrooms providing adaptable accommodation. The ground floor comprises very spacious light-filled through reception room, extended modern kitchen with breakfast bar, ground floor shower-room ideal for guests and a further ground floor reception room/double bedroom. The first floor benefits from two spacious bedrooms, single bedroom and a contemporary family bathroom. The second floor has been thoughtfully extended to provide a very spacious double bedroom with en-suite shower room.

Externally to the rear there is a well kept garden extending to just over 120ft. There is ample hardstanding area providing a space perfect for entertaining, whilst to the rear, there is a brick built outbuilding providing multiple uses. Furthermore, the front of the property offers a bricked driveway offering ample parking for three/four cars and gated side access.

The property is located in Hounslow West and is conveniently positioned to enjoy the many amenities the area has to offer. For the commuter Hounslow West Tube station offers the Piccadilly line into London, Whilst the A4, M4 and M25 offer drivers convenient routes out.

*** FIVE BEDROOMS**

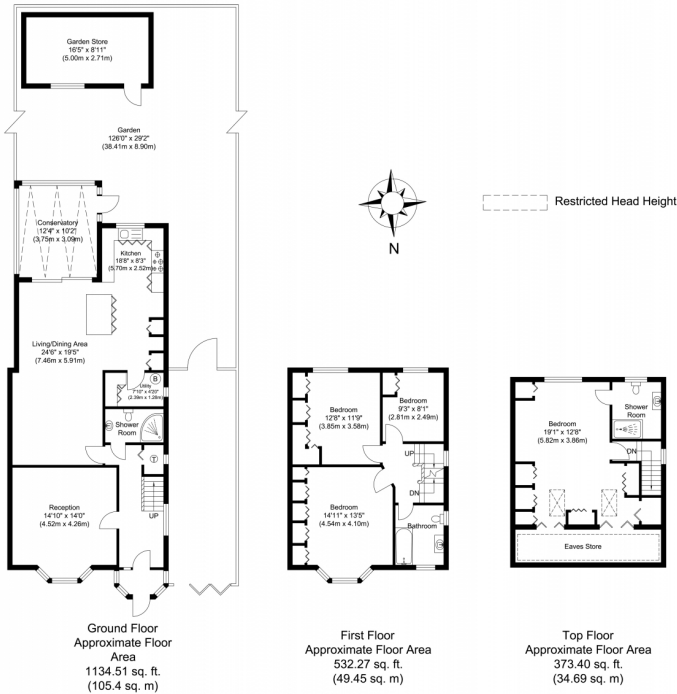
*** LARGE REAR EXTENSION**

*** CONSERVATORY**

*** THREE BATHROOMS**

*** GATED OFF STREET PARKING**

*** CLOSE TO HOUNSLOW WEST STATION**



Great South West Road, Hounslow, TW4

Illustration for identification purposes only, measurements are approximate, not to scale.

