



CHARLES BARTLETT  
RESIDENTIAL



# Flat 20 Stoneworks Place

Matlock Spa, Matlock, DE4 3UG

Asking price £425,000

UNDER OFFER A beautiful and spacious (872sqft) apartment finished to a very high standard and comprises an open plan reception room with integrated kitchen, master bedroom with ensuite shower, second double bedroom and main bathroom.

The apartments offer well sized balconies giving residents the opportunity to enjoy the stunning views of Matlock and the nearby countryside.

Stoneworks Place also benefits from secure entry system, allocated parking, lockable bike storage and dog washing facilities (extra charges apply).

Located in the heart of the Derbyshire Dales, Matlock Spa is just ten minutes' walk away from Matlock Town and a stone's throw from the Peak District National Park.

Local authority: Derbyshire Dales  
EPC rating C

PLEASE NOTE THAT PHOTOS AND FLOOR PLAN ARE OF OUR SHOW HOME

Viewing

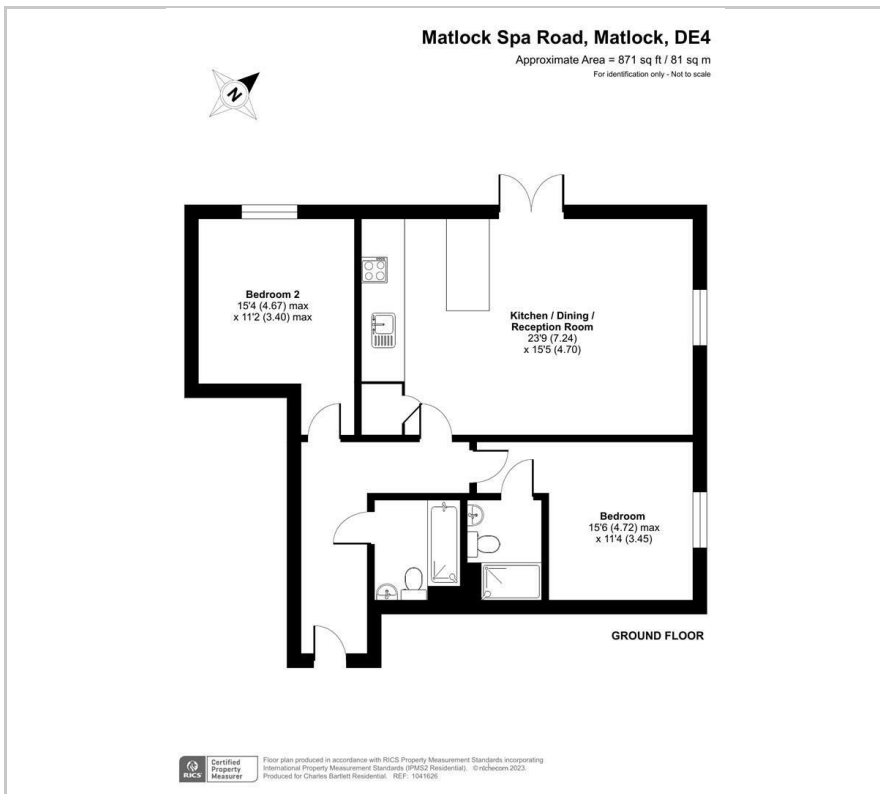
Please contact our Charles Bartlett Residential Office on 07939 496551

if you wish to arrange a viewing appointment for this property or require further information

- Two bedroom apartment
- Top floor
- Open plan living room and kitchen
- Master bedroom with ensuite
- Second double bedroom
- Bathroom
- Balcony
- Parking
- Bike storage
- Stunning views



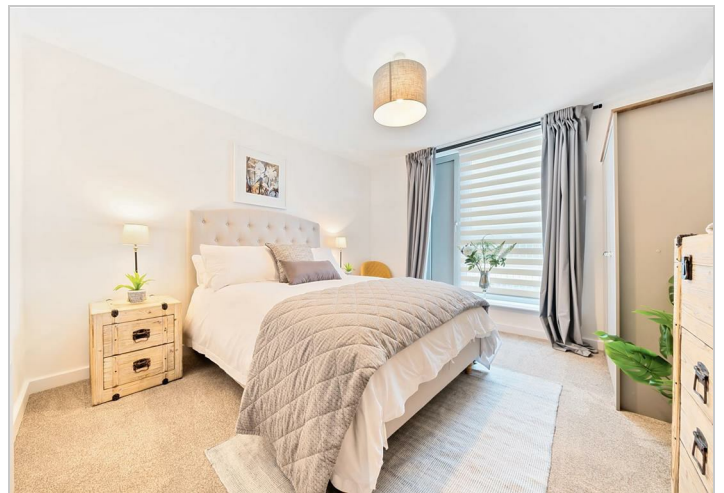
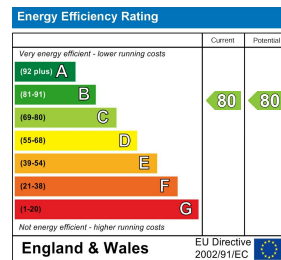
## Floor Plan



## Area Map



## Energy Efficiency Graph



These particulars, whilst believed to be accurate are set out as a general outline only for guidance and do not constitute any part of an offer or contract. Intending purchasers should not rely on them as statements of representation of fact, but must satisfy themselves by inspection or otherwise as to their accuracy. No person in this firm's employment has the authority to make or give any representation or warranty in respect of the property.