



CHARLES BARTLETT
RESIDENTIAL



4 Greyhound Mews

Letcombe Regis, Wantage, OX12 9WH

£1,625 Per month



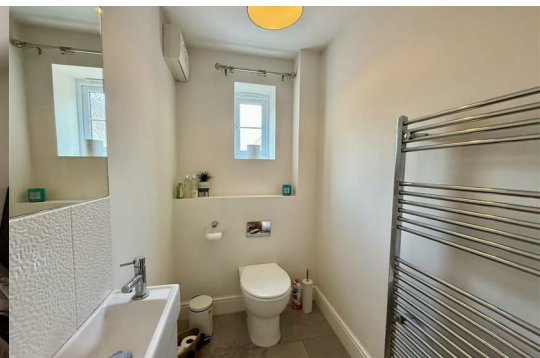
An immaculate two bedroom, link-detached home situated in the highly sought after village of Letcombe Regis near Wantage, Oxfordshire.

The property boasts a spacious entrance hallway, modern fitted kitchen with integrated appliances, WC, large reception room providing access via patio doors to the private rear garden with lawn and patio area.

The first floor comprises a master double bedroom with ensuite shower room and built in wardrobes, second double bedroom and a main bathroom.

Also benefits from a single garage and driveway parking.

Council tax band D
EPC Rating C



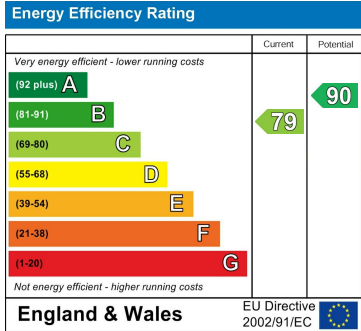
Area Map



Floor Plans



Energy Efficiency Graph



These particulars, whilst believed to be accurate are set out as a general outline only for guidance and do not constitute any part of an offer or contract. Intending purchasers should not rely on them as statements of representation of fact, but must satisfy themselves by inspection or otherwise as to their accuracy. No person in this firms employment has the authority to make or give any representation or warranty in respect of the property.