



CHARLES BARTLETT

RESIDENTIAL



13 Spa Villas

Matlock Spa, Matlock, DE4 3ST

£1,750 Per month

A rare opportunity to live in a two bedroom penthouse within this prestigious development, Matlock Spa, offering stunning views over the Derbyshire Dales and Matlock.

This incredibly spacious (855 sq ft) two bedroom penthouse offers an open plan living room and dining space, 619 sq ft wrap around balcony, master bedroom with ensuite shower room, second double bedroom and main bathroom.

Also boasts full height windows, lift access, intercom entry and lockable bike storage.

Viewings are a must to really appreciate how amazing these apartments are.

Available May 2025
EPC rating B
Council tax band D

Located in the heart of the Derbyshire Dales, Matlock Spa is just ten minutes' walk away from the newly revitalised Matlock Town and a stone's throw from the Peak District National Park.

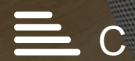
Surrounded by beautiful countryside, historic castles and delicious places to eat, Matlock Spa is extremely well connected to England's extensive road and rail network, offering a wide range of lifestyle options and stunning natural

- Two bedroom Penthouse
- Large balcony
- Spectacular views
- Open plan reception/kitchen
- Study space
- Master bedroom with ensuite
- Second double bedroom
- Allocated parking
- Main bathroom
- Lift access

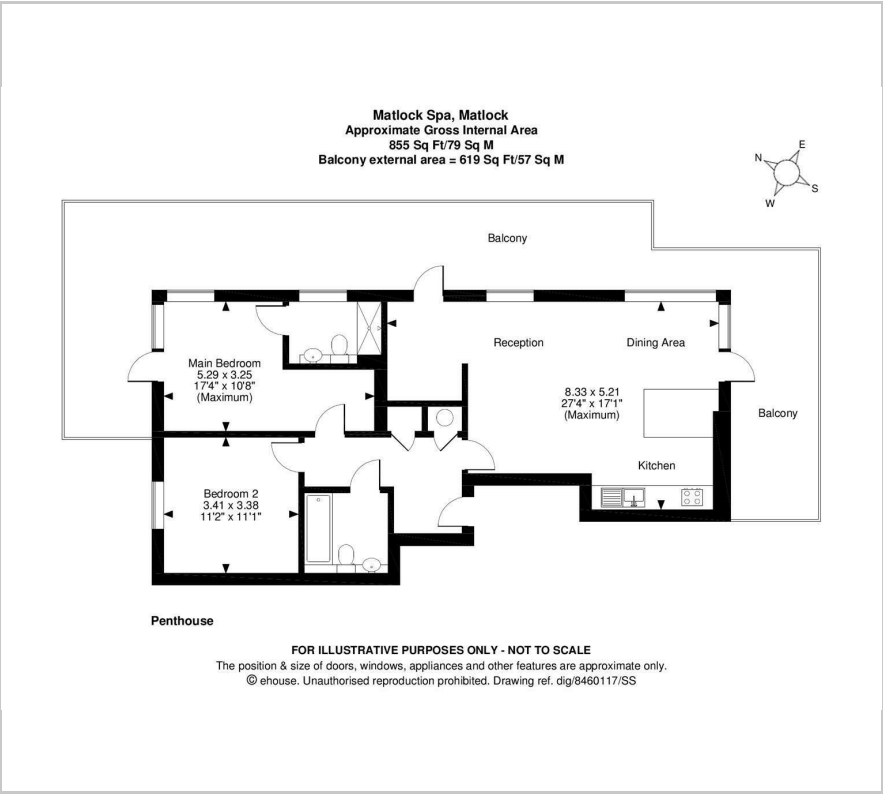
Viewing

Please contact our Charles Bartlett Residential Office on 07939 496551

if you wish to arrange a viewing appointment for this property or require further information



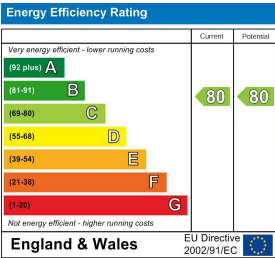
Floor Plan



Area Map



Energy Efficiency Graph



These particulars, whilst believed to be accurate are set out as a general outline only for guidance and do not constitute any part of an offer or contract. Intending purchasers should not rely on them as statements of representation of fact, but must satisfy themselves by inspection or otherwise as to their accuracy. No person in this firms employment has the authority to make or give any representation or warranty in respect of the property.