



CHARLES BARTLETT  
RESIDENTIAL



## 3 Morningside Walk

Matlock Spa, Matlock, DE4 3TF

£1,800 Per month



Three bedroom mid-terraced house offering stunning views across the Derbyshire Dales - what better way to start your day! The accommodation comprises large open plan living room, kitchen/diner, WC, master double bedroom with ensuite, second double bedroom, a third single bedroom and a family bathroom.

Also benefits from a shared car port and a private rear garden.

Located in the heart of the Derbyshire Dales, Matlock Spa is just ten minutes' walk away from the newly revitalised Matlock Town and a stone's throw from the Peak District National Park.

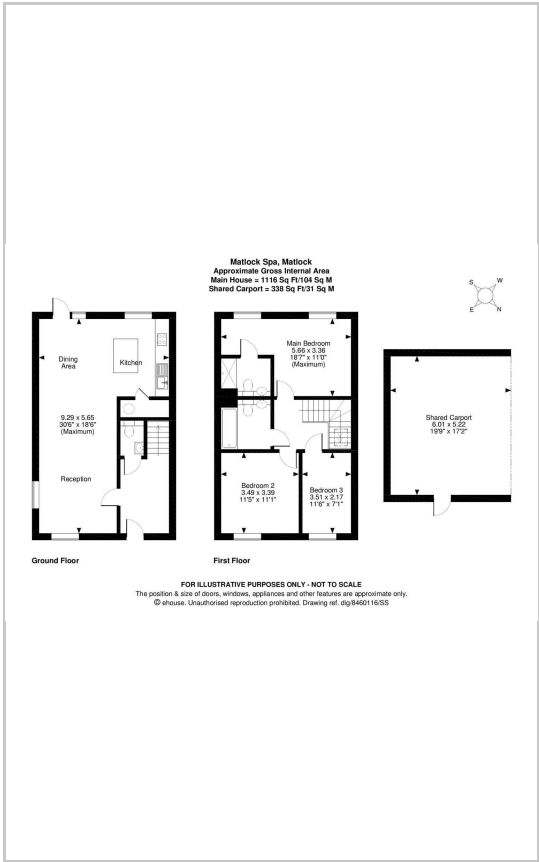
Surrounded by beautiful countryside, historic castles and delicious places to eat, Matlock Spa is extremely well connected to England's extensive road and rail network, offering a wide range of lifestyle options and stunning natural surroundings.



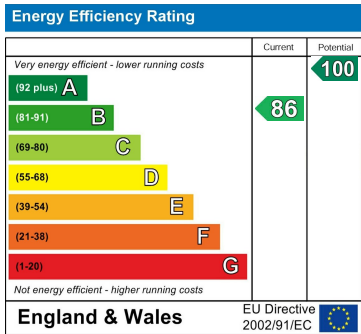
Area Map



Floor Plans



Energy Efficiency Graph



These particulars, whilst believed to be accurate are set out as a general outline only for guidance and do not constitute any part of an offer or contract. Intending purchasers should not rely on them as statements of representation of fact, but must satisfy themselves by inspection or otherwise as to their accuracy. No person in this firms employment has the authority to make or give any representation or warranty in respect of the property.

The Newt, Denchworth Manor Hyde Road, Denchworth, Oxford, OX12 0DX  
Tel: 07939 496551 Email: [charles@charlesbartlett.co.uk](mailto:charles@charlesbartlett.co.uk) [www.charlesbartlett.co.uk](http://www.charlesbartlett.co.uk)