



CHARLES BARTLETT
RESIDENTIAL



Stoneworks Place Stoneworks Place

Matlock Spa, Matlock, DE4 3UG

Asking price £425,000



A beautiful and spacious apartment finished to a very high standard and comprises an open plan reception room with integrated kitchen, master bedroom with ensuite shower, second double bedroom and main bathroom.

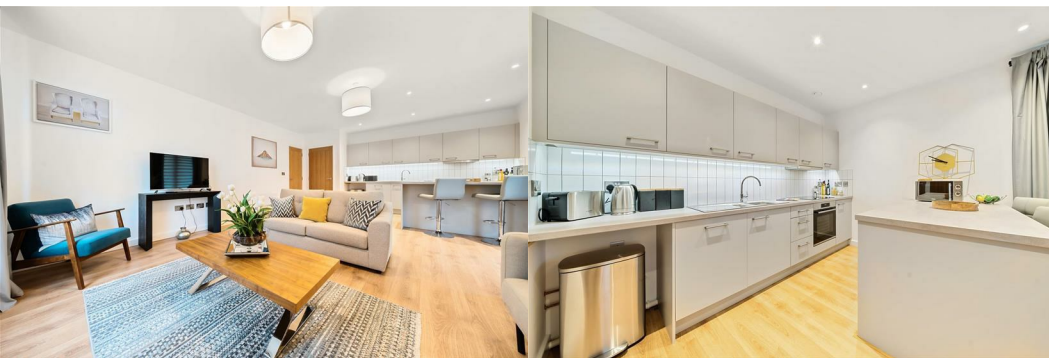
The apartments offer well sized balconies giving residents the opportunity to enjoy the stunning views of Matlock and the nearby countryside.

Stoneworks Place also benefits from secure entry system, allocated parking, lockable bike storage and dog washing facilities (extra charges apply).

Located in the heart of the Derbyshire Dales, Matlock Spa is just ten minutes' walk away from Matlock Town and a stone's throw from the Peak District National Park.

Local authority: Derbyshire Dales
EPC rating C

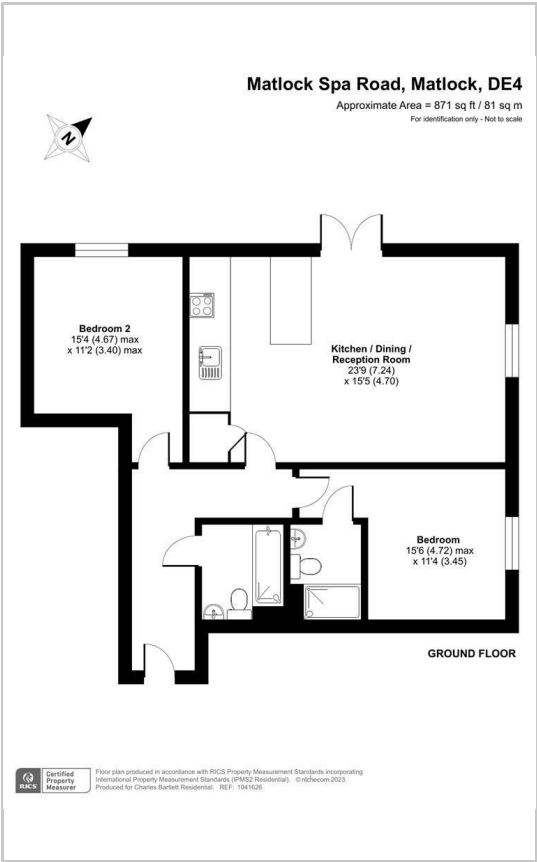
PLEASE NOTE THAT PHOTOS AND FLOOR PLAN ARE OF OUR SHOW HOME



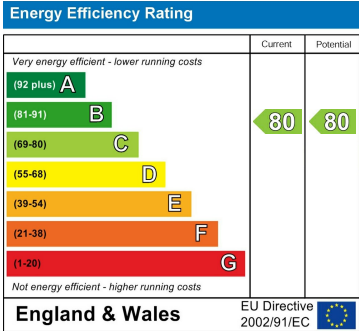
Area Map



Floor Plans



Energy Efficiency Graph



These particulars, whilst believed to be accurate are set out as a general outline only for guidance and do not constitute any part of an offer or contract. Intending purchasers should not rely on them as statements of representation of fact, but must satisfy themselves by inspection or otherwise as to their accuracy. No person in this firms employment has the authority to make or give any representation or warranty in respect of the property.

The Newt, Denchworth Manor Hyde Road, Denchworth, Oxford, OX12 0DX
 Tel: 07939 496551 Email: charles@charlesbartlett.co.uk www.charlesbartlett.co.uk