



CARLTON GATE ON SITE



31 Swallow Court Admiral Walk

, London, W9 3TX

Guide price £635,000

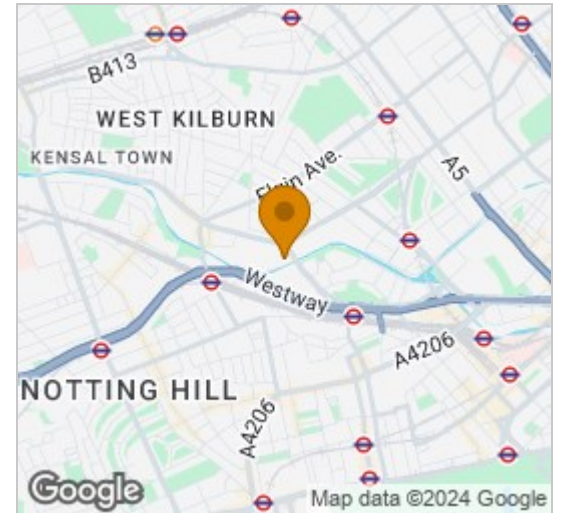


2 2 1 B

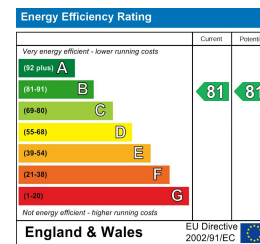
Floor Plan



Area Map



Energy Efficiency Graph



Viewing

Please contact our Charles Bartlett Residential Office on 07939 496551 if you wish to arrange a viewing appointment for this property or require further information.

- Two bedroom apartment
- Two balconies
- Second double bedroom
- Underground parking
- Close to local shops
- Two bathrooms
- Master bedroom with ensuite bathroom
- Bathroom
- 24/7 security
- Ideal investment opportunity

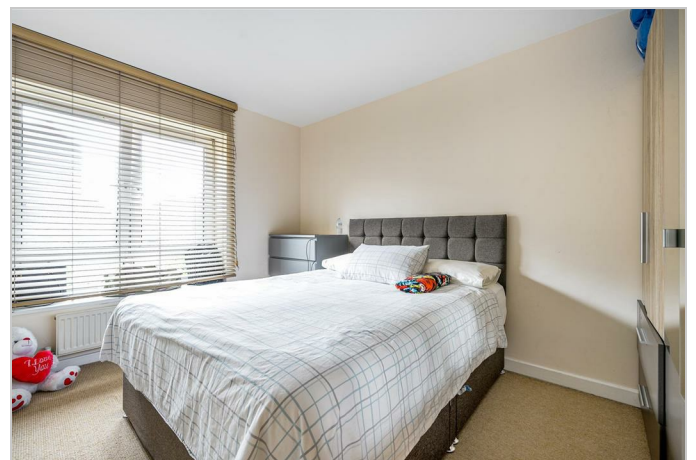
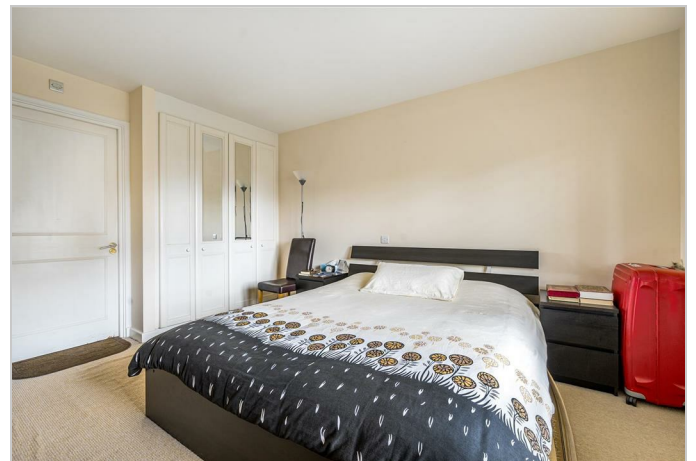
A spacious two bedroom, two bathroom apartment situated on the fourth floor with two balconies within the exclusive gated development of Carlton Gate, W9.

The property comprises a well sized reception room, modern fitted kitchen with integrated appliances, master double bedroom with ensuite bathroom, second double bedroom and main bathroom.

Resident benefits include 24 hour security and secure underground parking for one car.

Carlton Gate is ideally located within easy reach of all local amenities of Little Venice, Maida Vale and Warwick Avenue, whilst Westbourne Park and Notting Hill are a short distance away. Additionally, Paddington station provides national and international connections.

EPC rating B
 Council Tax Band G
 104 years remaining on lease
 Annual Ground rent £600.00
 Annual Service Charge £7,494.40



These particulars, whilst believed to be accurate are set out as a general outline only for guidance and do not constitute any part of an offer or contract. Intending purchasers should not rely on them as statements of representation of fact, but must satisfy themselves by inspection or otherwise as to their accuracy. No person in this firm's employment has the authority to make or give any representation or warranty in respect of the property.

The Newt, Denchworth Manor Hyde Road, Denchworth, Oxford, OX12 0DX
 Tel: 07939 496551 Email: charles@charlesbartlett.co.uk www.charlesbartlett.co.uk