



CHARLES BARTLETT
RESIDENTIAL



22 Finch Lodge Admiral Walk

, London, W9 3TB

Guide price £650,000



A very spacious two bedroom apartment, situated on the seventh floor of Finch Lodge within the impressive and highly sought after Carlton Gate development.

The property boasts a large reception room, modern fitted kitchen and integrated appliances, balcony, master double bedroom with ensuite bathroom, second bedroom and main bathroom.

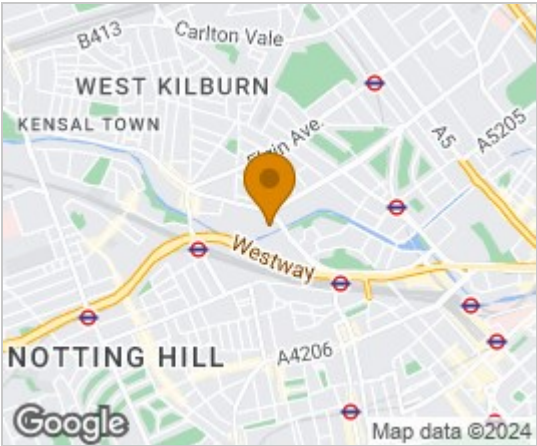
Carlton Gate's superb facilities include secure underground parking, 24/7 security, and membership of the exclusive Harbour Club providing indoor tennis courts, state-of-the-art gym equipment, an indoor swimming pool and a stunning spa area.

The property is just moments from local shops and amenities on Harrow Road, while a wider selection of shops, restaurants and bars are close by.

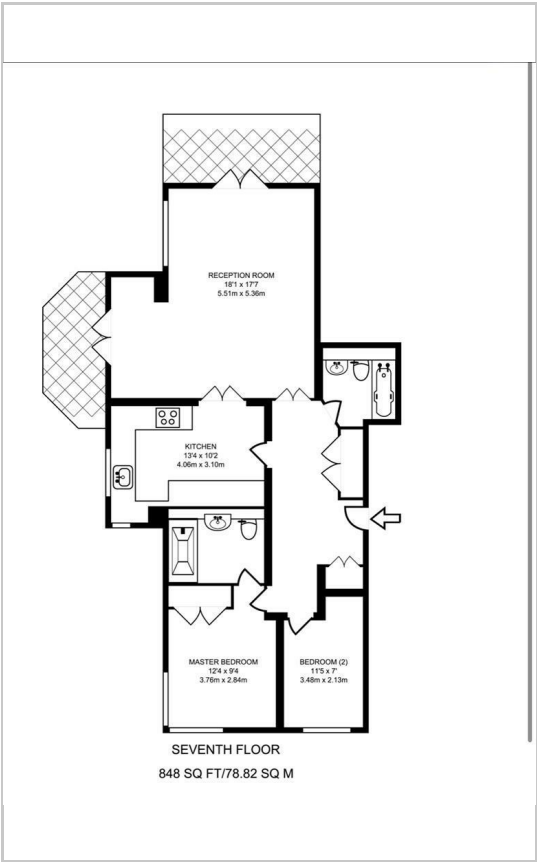
EPC rating D



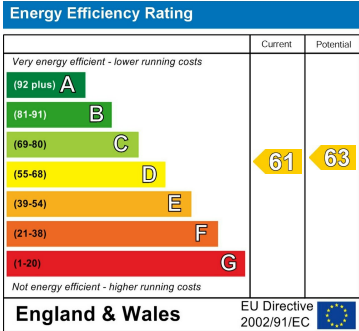
Area Map



Floor Plans



Energy Efficiency Graph



These particulars, whilst believed to be accurate are set out as a general outline only for guidance and do not constitute any part of an offer or contract. Intending purchasers should not rely on them as statements of representation of fact, but must satisfy themselves by inspection or otherwise as to their accuracy. No person in this firm's employment has the authority to make or give any representation or warranty in respect of the property.